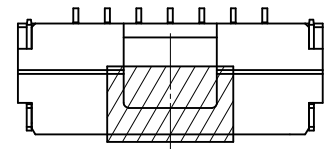
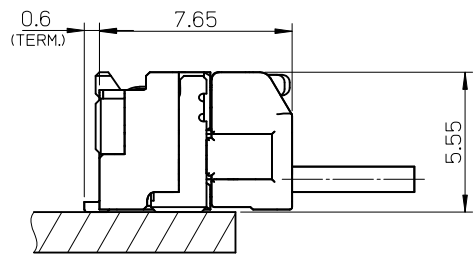
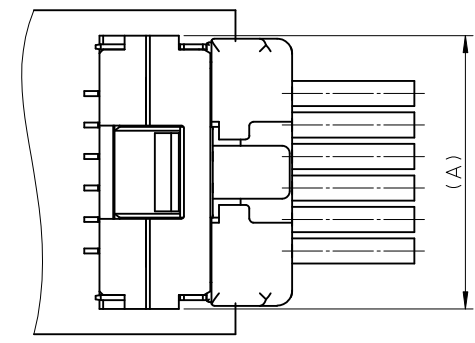
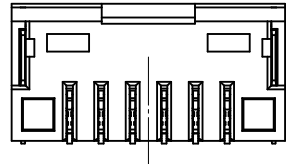
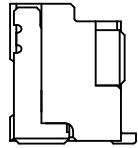


SECTION Z-Z



カプトンテープ付き
WITH KAPTON TAPE



嵌合図
MATED CONNECTORS

NOTES

1. 嵌合相手: 502380-****
MATE WITH : 502380-****
2. 端子テール部 及び ネイルの平坦度: 0.1MAX.
TAIL AND NAIL COPLANARITY TO BE 0.1 MAX.
3. 極数/2=偶数に適用.
APPLY FOR CKT. SIZE / 2 = EVEN.
4. 端子テール部 及び ネイルに錫めっきを使用しているため、
外観に摺動痕が付く場合が御座います。
THE WOUND OF FRICTION MIGHT ADHERE TO EXTERNALS
BECAUSE THE TIN PLATING IS USED FOR THA TAIL AND NAIL.
5. 本製品のプラスチック部に黒点等が確認される場合や
色合いが異なる場合がありますが、製品性能に影響はありません。
THERE IS NO INFLUENCE IN THE PRODUCT PERFORMANCE THOUGH
THE BLACK SPOT ETC. MIGHT BE CONFIRMED TO THE PLASTIC PART
OF THIS PRODUCT AND THE SHADE MIGHT BE DIFFERENT.
6. ELV 及び RoHS 適合品
ELV AND RoHS COMPLIANT

| | | | | | |
|-----|------|------|-------|--|------------------|
| 3.4 | 7.5 | 11 | 12.1 | 502386-07** | 7 |
| 3.4 | 6.25 | 9.75 | 10.85 | 502386-06** | 6 |
| 3.4 | 5 | 8.5 | 9.6 | 502386-05** | 5 |
| 3.4 | 3.75 | 7.25 | 8.35 | 502386-04** | 4 |
| 2.6 | 2.5 | 6 | 7.1 | 502386-03** | 3 |
| 2.2 | 1.25 | 4.75 | 5.85 | 502386-02** | 2 |
| D | C | B | A | EMBOSSSED TAPE PACKAGE オーダー番号 ORDER No. | 極数 (CKT. NO.) |

| 番号 NO. | 部品 PART | 材質 MATERIAL |
|-----------|-------------------|--|
| ① | ハウジング HOUSING | 耐熱性樹脂 UL94V-0 色:SHEET 3 参照 HEATPROOF RESIN UL94V-0 COLOR : SEE SHEET 3 |
| ② | ターミナル TERMINAL | 銅合金 COPPER ALLOY 錫めっき : 1.0 micro-meter MIN. TIN (TAIL AREA) ニッケルめっき(下地): 1.0 micro-meter MIN. NICKEL (UNDER PLATING) |
| ③ | ネイル NAIL | 銅合金 COPPER ALLOY 錫めっき: 1.0 micro-meter MIN. TIN ニッケルめっき(下地): 1.0 micro-meter MIN. NICKEL (UNDER PLATING) |

| | | | | | | | |
|---|--|----------------------------|--------------------|--|-------------------------------|---------------------|--|
| REVISED EC NO.: J2010-2320 DRWN: YGOTO 2010/05/19 CHKD: K. ASAKAWA 2010/05/20 APPR: NUKITA 2010/05/21 | DESCRIPTION GENERAL TOLERANCES (UNLESS SPECIFIED) 10 UNDER ±0.2 10 OVER 30 UNDER ±0.25 30 OVER ±0.3 ANGULAR ±3 ° DRAFT WHERE APPLICABLE MUST REMAIN WITHIN DIMENSIONS | DIMENSION STYLE MM ONLY | SCALE 5:1 | DESIGN UNITS METRIC | THIRD ANGLE PROJECTION | | |
| | | DRAWN BY T. MIYAZAKI | DATE 2006/08/28 | TITLE 1.25 W/B CONN. SINGLE R/A REC. ASS'Y 2-7CKT. | | | |
| | | CHECKED BY K. ASAKAWA | DATE 2006/08/28 | MOLEX INCORPORATED | | | |
| | | APPROVED BY YO. ITO | DATE 2006/08/28 | MATERIAL NO. SEE TABLE | DOCUMENT NO. SD-502386-001 | SHEET NO. 1 OF 3 | |

THIS DRAWING CONTAINS INFORMATION THAT IS PROPRIETARY TO MOLEX INCORPORATED AND SHOULD NOT BE USED WITHOUT WRITTEN PERMISSION



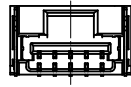
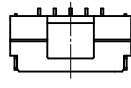
2 CKT.



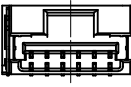
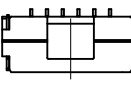
3 CKT.



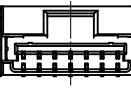
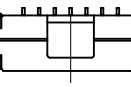
4 CKT.



5 CKT.

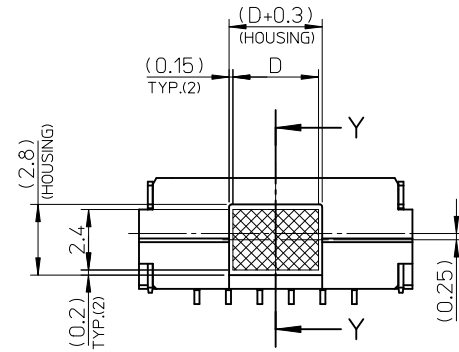


6 CKT.

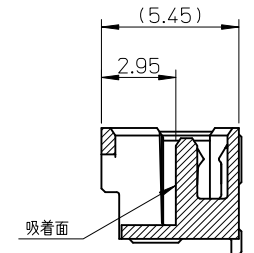


7 CKT.

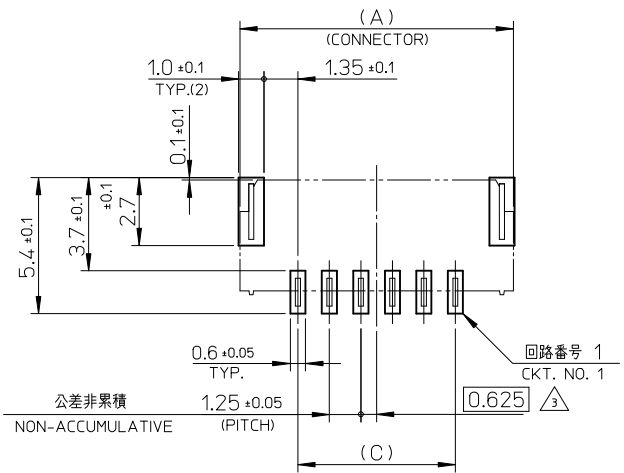
極数の種類
KIND OF CKT. NO.(FRONT VIEW)



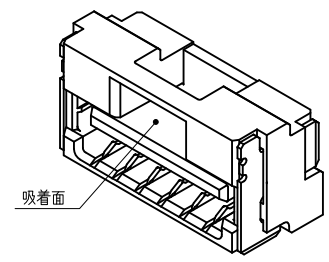
吸着範囲
VACUME AREA



SECTION Y-Y



基板パターンレイアウト (参考)
RECCOMENDED P.C.B. PATTERN LAYOUT (REF.)

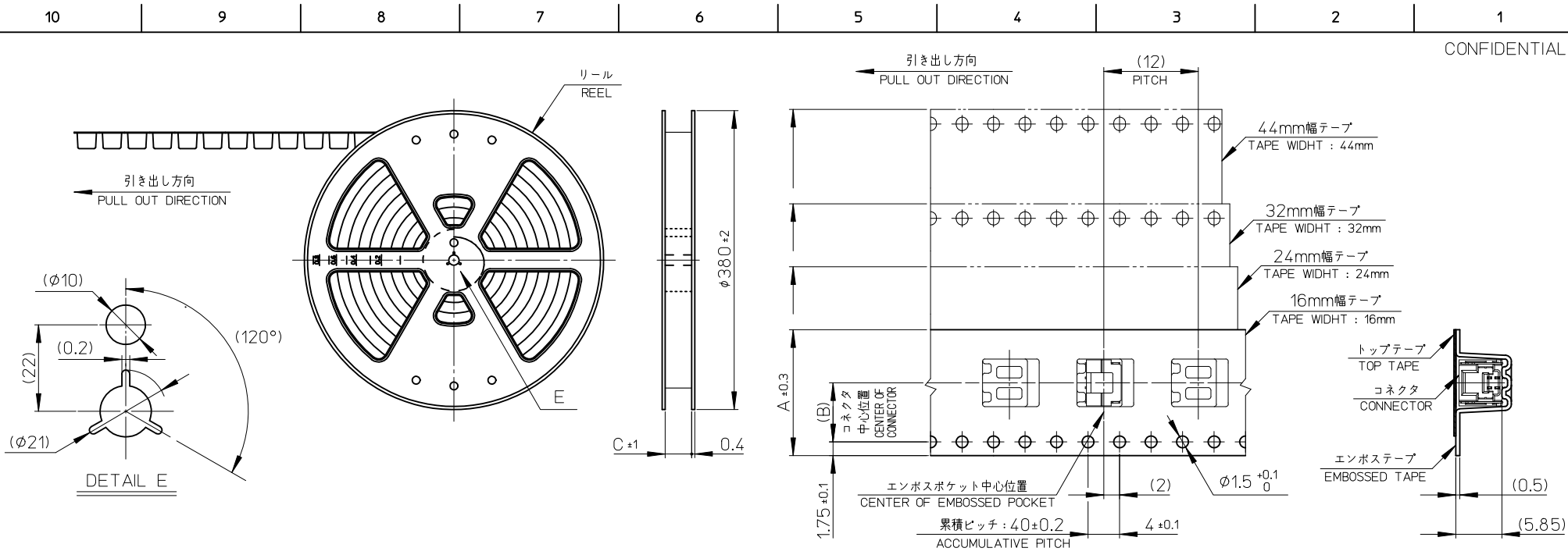


| | | | | | | |
|--|---------------------------------------|--|---|--------------------|---|-------------------------------|
| REVISED EC NO.: J2010-2320 DRWN: YG010 2010/05/19 CHK'D: K. ASAKAWA 2010/05/20 APPR: NUKITA 2010/05/21 | GENERAL TOLERANCES (UNLESS SPECIFIED) | | DIMENSION STYLE MM ONLY | SCALE 5:1 | DESIGN UNITS METRIC | THIRD ANGLE PROJECTION |
| | 10 UNDER | ±0.2 | DRAWN BY T. MIYAZAKI | DATE 2006/08/28 | TITLE 1.25 W/B CONN. SINGLE R/A REC. ASS'Y 2-7CKT. | |
| | 10 OVER 30 UNDER | ±0.25 | CHECKED BY K. ASAKAWA | DATE 2006/08/28 | MOLEX INCORPORATED | |
| | 30 OVER | ±0.3 | APPROVED BY Y.O. ITO | DATE 2006/08/28 | MATERIAL NO. SEE TABLE | DOCUMENT NO. SD-502386-001 |
| REV | DESCRIPTION | ANGULAR ±3 ° | THIS DRAWING CONTAINS INFORMATION THAT IS PROPRIETARY TO MOLEX INCORPORATED AND SHOULD NOT BE USED WITHOUT WRITTEN PERMISSION | | | |
| | | DRAFT WHERE APPLICABLE MUST REMAIN WITHIN DIMENSIONS | | | | |

| WITH CAPTON TAPE | | | | | | | | | | |
|---|------------------------------|---|------------------------------|---|------------------------------|---|------------------------------|---|------------------------------|-----------------|
| HSG COLOR : GREEN | | HSG COLOR : BLUE | | HSG COLOR : RED | | HSG COLOR : BLACK | | HSG COLOR : NATURAL | | |
| 502386-0736 | 502386-**16 | 502386-0734 | 502386-**14 | 502386-0732 | 502386-**12 | 502386-0731 | 502386-**11 | 502386-0772 | 502386-**08 | 7 |
| 502386-0636 | | 502386-0634 | | 502386-0632 | | 502386-0631 | | 502386-0672 | | 6 |
| 502386-0536 | | 502386-0534 | | 502386-0532 | | 502386-0531 | | 502386-0572 | | 5 |
| 502386-0436 | | 502386-0434 | | 502386-0432 | | 502386-0431 | | 502386-0472 | | 4 |
| 502386-0336 | | 502386-0334 | | 502386-0332 | | 502386-0331 | | 502386-0372 | | 3 |
| 502386-0236 | | 502386-0234 | | 502386-0232 | | 502386-0231 | | 502386-0272 | | 2 |
| EMBOSSSED TAPE PACKAGE オーダー番号ORDER No. | コネクタ シリズ CONNECTOR SIRIES | EMBOSSSED TAPE PACKAGE オーダー番号ORDER No. | コネクタ シリズ CONNECTOR SIRIES | EMBOSSSED TAPE PACKAGE オーダー番号ORDER No. | コネクタ シリズ CONNECTOR SIRIES | EMBOSSSED TAPE PACKAGE オーダー番号ORDER No. | コネクタ シリズ CONNECTOR SIRIES | EMBOSSSED TAPE PACKAGE オーダー番号ORDER No. | コネクタ シリズ CONNECTOR SIRIES | 極数 (KT. NO.) |

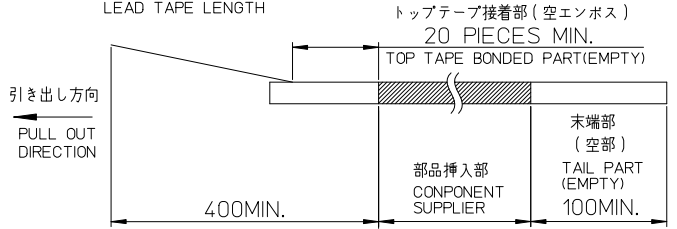
| WITHOUT CAPTON TAPE | | | | | | | | | | |
|---|------------------------------|---|------------------------------|---|------------------------------|---|------------------------------|---|------------------------------|-----------------|
| HSG COLOR : GREEN | | HSG COLOR : BLUE | | HSG COLOR : RED | | HSG COLOR : BLACK | | HSG COLOR : NATURAL | | |
| 502386-0746 | 502386-**26 | 502386-0744 | 502386-**24 | 502386-0742 | 502386-**22 | 502386-0741 | 502386-**21 | 502386-0770 | 502386-**09 | 7 |
| 502386-0646 | | 502386-0644 | | 502386-0642 | | 502386-0641 | | 502386-0670 | | 6 |
| 502386-0546 | | 502386-0544 | | 502386-0542 | | 502386-0541 | | 502386-0570 | | 5 |
| 502386-0446 | | 502386-0444 | | 502386-0442 | | 502386-0441 | | 502386-0470 | | 4 |
| 502386-0346 | | 502386-0344 | | 502386-0342 | | 502386-0341 | | 502386-0370 | | 3 |
| 502386-0246 | | 502386-0244 | | 502386-0242 | | 502386-0241 | | 502386-0270 | | 2 |
| EMBOSSSED TAPE PACKAGE オーダー番号ORDER No. | コネクタ シリズ CONNECTOR SIRIES | EMBOSSSED TAPE PACKAGE オーダー番号ORDER No. | コネクタ シリズ CONNECTOR SIRIES | EMBOSSSED TAPE PACKAGE オーダー番号ORDER No. | コネクタ シリズ CONNECTOR SIRIES | EMBOSSSED TAPE PACKAGE オーダー番号ORDER No. | コネクタ シリズ CONNECTOR SIRIES | EMBOSSSED TAPE PACKAGE オーダー番号ORDER No. | コネクタ シリズ CONNECTOR SIRIES | 極数 (KT. NO.) |

| | | | | | | | | |
|---|---------------------------------------|---|--|--|--|-------------------------------|------------------------|--|
| REVISED EC NO: J2010-2320 DRWN: YGOTO 2010/05/19 CH'KD: K. ASAKAWA 2010/05/20 APPR: NUKITA 2010/05/21 | GENERAL TOLERANCES (UNLESS SPECIFIED) | | DIMENSION STYLE MM ONLY | | SCALE ---- | DESIGN UNITS METRIC | THIRD ANGLE PROJECTION | |
| | 10 UNDER | ±0.2 | DRAWN BY DATE T. MIYAZAKI 2006/08/28 | | TITLE 1.25 W/B CONN. SINGLE R/A REC. ASS'Y 2-7CKT. | | | |
| | 10 OVER 30 UNDER | ±0.25 | CHECKED BY DATE K. ASAKAWA 2006/08/28 | | APPROVED BY DATE YO. ITO 2006/08/28 | | | |
| | 30 OVER | ±0.3 | MATERIAL NO. | | DOCUMENT NO. | | SHEET NO. | |
| | ANGULAR ±3 ° | | SEE TABLE | | SD-502386-001 | | 3 OF 3 | |
| DRAFT WHERE APPLICABLE MUST REMAIN WITHIN DIMENSIONS | | THIS DRAWING CONTAINS INFORMATION THAT IS PROPRIETARY TO MOLEX INCORPORATED AND SHOULD NOT BE USED WITHOUT WRITTEN PERMISSION | | | | | | |



NOTES

- 製品詳細寸法については、SD-502386-001, -002 を参照下さい。
PLEASE REFER TO SD-502386-001, -002 FOR THE DETAILED DIMENSION OF THE CONNECTOR.
- 梱包数量 : 1200個
NUMBER OF CONNECTORS : 1200 PIECES/REEL.
- リードテープ長さ
LEAD TAPE LENGTH



- 材料
MATERIAL
キャリアテープ : ポリスチレン
CARRIER TAPE : POLYSTYRENE
トップテープ : ポリエステル, ポリエチレン, ポリエチレンテレフタレート
TOP TAPE : POLYESTER, POLYETHYLENE, POLYETHYLENE TEREPHTHALATE
リール : ポリスチレン <リサイクル材を含む>
REEL : POLYSTYRENE <RECYCLE MATERIAL CONTAINED>
- ELV 及び RoHS 適合品
ELV AND ROHS COMPLIANT

| | | | | |
|------|------|----|-------------|----|
| 45.5 | 20.2 | 44 | 502386-15** | 15 |
| 45.5 | 20.2 | 44 | 502386-14** | 14 |
| 33.5 | 14.2 | 32 | 502386-13** | 13 |
| 33.5 | 14.2 | 32 | 502386-12** | 12 |
| 33.5 | 14.2 | 32 | 502386-11** | 11 |
| 33.5 | 14.2 | 32 | 502386-10** | 10 |
| 25.5 | 11.5 | 24 | 502386-09** | 9 |
| 25.5 | 11.5 | 24 | 502386-08** | 8 |
| 25.5 | 11.5 | 24 | 502386-07** | 7 |
| 25.5 | 11.5 | 24 | 502386-06** | 6 |
| 25.5 | 11.5 | 24 | 502386-05** | 5 |
| 25.5 | 11.5 | 24 | 502386-04** | 4 |
| 17.5 | 7.5 | 16 | 502386-03** | 3 |
| 17.5 | 7.5 | 16 | 502386-02** | 2 |

| | | | | | | | | | |
|--|---------------------------------------|---|----------------------------|---------------------------|---|-------------------------------|--|------------------------|--|
| REVISED EC NO: J2010-2024 DRWN: YGOTO 2010/04/07 CHKD: K. ASAKAWA 2010/04/12 APPR: NUKITA 2010/04/13 | GENERAL TOLERANCES (UNLESS SPECIFIED) | | DIMENSION STYLE MM ONLY | | SCALE --- | DESIGN UNITS METRIC | | THIRD ANGLE PROJECTION | |
| | 10 UNDER | ±0.2 | DRAWN BY T. MIYAZAKI | DATE 2006/10/16 | TITLE 1.25 W/B CONN. SINGLE R/A REC. EMBTP PKG | | | | |
| | 10 OVER 30 UNDER | ±0.25 | CHECKED BY K. ASAKAWA | DATE 2006/10/16 | MATERIAL NO. SD-502386-003 | | | | |
| | 30 OVER | ±0.3 | APPROVED BY Y.O. ITO | DATE 2006/10/16 | SHEET NO. 1 OF 2 | | | | |
| REV | DESCRIPTION | ANGULAR ±3 ° | | MATERIAL NO. SEE TABLE | | DOCUMENT NO. SD-502386-003 | | SHEET NO. 1 OF 2 | |
| DRAFT WHERE APPLICABLE MUST REMAIN WITHIN DIMENSIONS | | THIS DRAWING CONTAINS INFORMATION THAT IS PROPRIETARY TO MOLEX INCORPORATED AND SHOULD NOT BE USED WITHOUT WRITTEN PERMISSION | | | | | | | |

| WITH CAPTON TAPE | | | | | | | | | | |
|-------------------------------|----------------------|-------------------------------|----------------------|-------------------------------|----------------------|-------------------------------|----------------------|-------------------------------|----------------------|-----------------|
| HSG COLOR : GREEN | | HSG COLOR : BLUE | | HSG COLOR : RED | | HSG COLOR : BLACK | | HSG COLOR : NATURAL | | |
| --/-- | --/-- | --/-- | --/-- | --/-- | --/-- | --/-- | --/-- | --/-- | --/-- | 15 |
| --/-- | --/-- | --/-- | --/-- | --/-- | --/-- | --/-- | --/-- | --/-- | --/-- | 14 |
| --/-- | --/-- | --/-- | --/-- | --/-- | --/-- | --/-- | --/-- | --/-- | --/-- | 13 |
| --/-- | --/-- | --/-- | --/-- | --/-- | --/-- | --/-- | --/-- | --/-- | --/-- | 12 |
| --/-- | --/-- | --/-- | --/-- | --/-- | --/-- | --/-- | --/-- | --/-- | --/-- | 11 |
| --/-- | --/-- | --/-- | --/-- | --/-- | --/-- | --/-- | --/-- | --/-- | --/-- | 10 |
| --/-- | --/-- | --/-- | --/-- | --/-- | --/-- | --/-- | --/-- | --/-- | --/-- | 9 |
| --/-- | --/-- | --/-- | --/-- | --/-- | --/-- | --/-- | --/-- | --/-- | --/-- | 8 |
| 502386-**16 | 502386-0736 | 502386-**14 | 502386-0734 | 502386-**12 | 502386-0732 | 502386-**11 | 502386-0731 | 502386-**08 | 502386-0772 | 7 |
| | 502386-0636 | | 502386-0634 | | 502386-0632 | | 502386-0631 | | 502386-0672 | 6 |
| | 502386-0536 | | 502386-0534 | | 502386-0532 | | 502386-0531 | | 502386-0572 | 5 |
| | 502386-0436 | | 502386-0434 | | 502386-0432 | | 502386-0431 | | 502386-0472 | 4 |
| | 502386-0336 | | 502386-0334 | | 502386-0332 | | 502386-0331 | | 502386-0372 | 3 |
| | 502386-0236 | | 502386-0234 | | 502386-0232 | | 502386-0231 | | 502386-0272 | 2 |
| コネクタ シリーズ CONNECTOR SERIES | 製品番号 MATERIAL NO. | コネクタ シリーズ CONNECTOR SERIES | 製品番号 MATERIAL NO. | コネクタ シリーズ CONNECTOR SERIES | 製品番号 MATERIAL NO. | コネクタ シリーズ CONNECTOR SERIES | 製品番号 MATERIAL NO. | コネクタ シリーズ CONNECTOR SERIES | 製品番号 MATERIAL NO. | 極数 (CT. NO.) |

| WITHOUT CAPTON TAPE | | | | | | | | | | | | | | | |
|---------------------|-------------------------------|------------------|----------------------|-----------------|-------------------------------|-------------------|----------------------|---------------------|-------------------------------|----------------------|-------------------------------|----------------------|-------------------------------|----------------------|-----------------|
| HSG COLOR : GREEN | | HSG COLOR : BLUE | | HSG COLOR : RED | | HSG COLOR : BLACK | | HSG COLOR : NATURAL | | | | | | | |
| | 502386-1546 | | 502386-1544 | | 502386-1542 | | 502386-1541 | | 502386-1570 | 15 | | | | | |
| | 502386-1446 | | 502386-1444 | | 502386-1442 | | 502386-1441 | | 502386-1470 | 14 | | | | | |
| | 502386-1346 | | 502386-1344 | | 502386-1342 | | 502386-1341 | | 502386-1370 | 13 | | | | | |
| | 502386-1246 | | 502386-1244 | | 502386-1242 | | 502386-1241 | | 502386-1270 | 12 | | | | | |
| | 502386-1146 | | 502386-1144 | | 502386-1142 | | 502386-1141 | | 502386-1170 | 11 | | | | | |
| | 502386-1046 | | 502386-1044 | | 502386-1042 | | 502386-1041 | | 502386-1070 | 10 | | | | | |
| 502386-**26 | 502386-0946 | 502386-**24 | 502386-0944 | 502386-**22 | 502386-0942 | 502386-**21 | 502386-0941 | 502386-**09 | 502386-0970 | 9 | | | | | |
| | 502386-0846 | | 502386-0844 | | 502386-0842 | | 502386-0841 | | 502386-0870 | 8 | | | | | |
| | 502386-0746 | | 502386-0744 | | 502386-0742 | | 502386-0741 | | 502386-0770 | 7 | | | | | |
| | 502386-0646 | | 502386-0644 | | 502386-0642 | | 502386-0641 | | 502386-0670 | 6 | | | | | |
| | 502386-0546 | | 502386-0544 | | 502386-0542 | | 502386-0541 | | 502386-0570 | 5 | | | | | |
| | 502386-0446 | | 502386-0444 | | 502386-0442 | | 502386-0441 | | 502386-0470 | 4 | | | | | |
| | 502386-0346 | | 502386-0344 | | 502386-0342 | | 502386-0341 | | 502386-0370 | 3 | | | | | |
| | 502386-0246 | | 502386-0244 | | 502386-0242 | | 502386-0241 | | 502386-0270 | 2 | | | | | |
| | コネクタ シリーズ CONNECTOR SERIES | | 製品番号 MATERIAL NO. | | コネクタ シリーズ CONNECTOR SERIES | | 製品番号 MATERIAL NO. | | コネクタ シリーズ CONNECTOR SERIES | 製品番号 MATERIAL NO. | コネクタ シリーズ CONNECTOR SERIES | 製品番号 MATERIAL NO. | コネクタ シリーズ CONNECTOR SERIES | 製品番号 MATERIAL NO. | 極数 (CT. NO.) |

| | | | | | | | | |
|--|---------------------------------------|-------|--|--------------------|---|------------------------|------------------------|--|
| REVISED EC NO. J2010-2024 DRWN: YGOTO 2010/04/07 CH'D: K. ASAKAWA 2010/04/12 APPR: NUKITA 2010/04/12 | GENERAL TOLERANCES (UNLESS SPECIFIED) | | DIMENSION STYLE MM ONLY | | SCALE --- | DESIGN UNITS METRIC | THIRD ANGLE PROJECTION | |
| | 10 UNDER | ±0.2 | DRAWN BY T. MIYAZAKI | DATE 2006/10/16 | TITLE 1.25 W/B CONN. SINGLE R/A REC. EMBTP PKG | | | |
| | 10 OVER 30 UNDER | ±0.25 | CHECKED BY K. ASAKAWA | DATE 2006/10/16 | MATERIAL NO. SD-502386-003 | | | |
| | 30 OVER | ±0.3 | APPROVED BY Y. ITO | DATE 2006/10/16 | SHEET NO. 2 OF 2 | | | |
| | ANGULAR ±3 ° | | DRAFT WHERE APPLICABLE MUST REMAIN WITHIN DIMENSIONS | | SEE TABLE | | MOLEX INCORPORATED | |