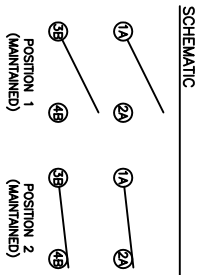


PANEL THICKNESS	X
0.030~0.049 [0.75~1.25]	0.795 [20.2]
0.049~0.079 [1.25~2.00]	0.803 [20.4]
0.079~0.118 [2.00~3.00]	0.811 [20.6]



SCHEMATIC

SPECIFICATIONS

FUNCTION:
2P1T OFF-ON

RATINGS:
ANSI/UL 1054 and CAN/CSA C22.2 No. 55 (E194579):
10A 125VAC [UR, CLR]

EN 61058-1:2002:
6(2)A 250V~ μ 1E4 T125/55 [ENEC14, SEMKO]




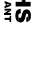
CONTACT RESISTANCE:
Initial: 5mΩ Max. at 50VAC

INSULATION RESISTANCE:
100MΩ Min. at 500VDC

DIELECTRIC STRENGTH:
1,500VAC for 1 Minute

ELECTRICAL LIFE:
6,000 Cycles [UR, CLR]
10,000 Cycles [ENEC14, SEMKO: 10(4)A 250V~]

TEMPERATURE:
Operating: -20°C to 105°C [UR, CLR]
Operating: -20°C to 125°C [ENEC14, SEMKO]

APPROVALS:




ROHS COMPLIANT

COLORS AND MARKINGS

BODY:
Black

ACTUATOR:
Black

MARKINGS:
I/O Vertical (1)

MARKING COLOR:
White

MATERIALS

BODY:
Polyamide 6/6 (PA66), UL94 V-2

ACTUATOR:
Polyamide 6/6 (PA66), UL94 V-2

MOBILE CONTACT:
Silver Plated Copper

CONTACTS:
Silver Alloy

TERMINALS:
Silver Plated Copper
Silver Plated Brass

SUGGESTED PANEL CUTOUT

ACTUATOR	A	09/08/11	CAB
BODY	B	11/10/04	BA
COLORS	A	09/08/11	CAB
MATERIALS	A	09/08/11	BA
SPECIFICATIONS	B	11/10/04	BA
REFERENCE	REV.	DATE	BY

THE INFORMATION CONTAINED IN THIS DOCUMENT IS PROPRIETARY TO E-SWITCH-LAMB

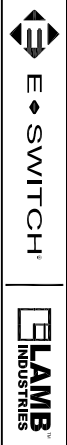
REV.	DATE	DESCRIPTION	BY
A	2013	CORRECT TERMINAL CALL-OUTS	BA
B	1872	INITIAL RELEASE	BA
A	1872	INITIAL RELEASE	BA
B	10/01/14	FOR	BA

DIMENSIONS
INCHES [MILLIMETERS]

GENERAL TOLERANCES
±0.008 [±0.2] / ±1'

SCALE
DRAWING NOT TO SCALE

PROJECTION
FIRST ANGLE



RR81231121

DRAWING NUMBER	DATE	REVISION
38-RR81231121	JANUARY 14, 2010	B