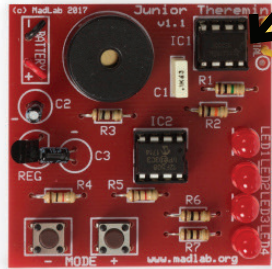


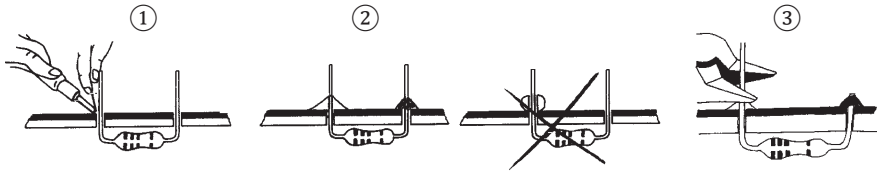
START

solder side - soldeer zijde - cote soudage - Lötenseite - lado de los soldadura

component side - componentenzijde - cote composants - Bauteilseite - lado de los componentes

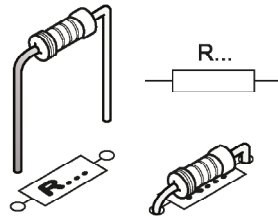


Soldering - Solderen - Soudage - Lötten - Soldadura - Lötning - Juottaminen - Saldatura - Solda



component side - componentenzijde - cote composants - Bauteilseite - lado de los componentes

1 Resistor - Weerstand - Résistance - Widerstand - Resistencia - Motstand - Vastus - Resistenze



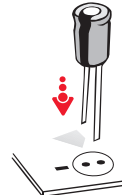
R1 : 1M (brown, black, green) - (bruin, zwart, groen) - (marron; noir, vert) - (braun, schwarz, grün) - (marrón, negro, verde)

R2 : 10K (brown, black, orange) - (bruin, zwart, oranje) - (marron, noir, orange) - (braun, schwarz, orange) - (marrón, negro, naranja)

R3, R6, R7 : 100R (brown, black, brown) - (bruin, zwart, bruin) - (marron, noir, marron) - (braun, schwarz, braun) - (marrón, negro, marrón)

R4, R5 : 1K (brown, black, red) - (bruin, zwart, rood) - (marron, noir, rouge) - (braun, schwarz, rot) - (marrón, negro, rojo)

2 Capacitor



Watch the polarity ! Att. la polarité !

C2, C3 : 10u

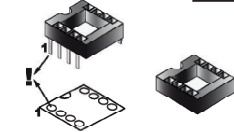


C1 : 100n

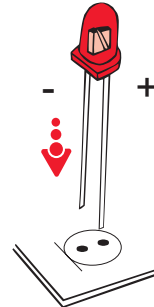
3 Chip socket

IC1, IC2

Watch the notch ! Att. la entaille !



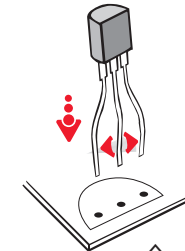
4 LEDs



Watch the polarity ! Att. la polarité !

LED1 ... LED4

5 Regulator



Watch the polarity ! Att. la polarité !

REG : 78L05

6 Piezo



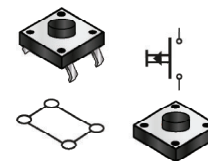
PIEZO

7 Battery

- : black, zwart, noir, schwarz, negro
+ : red, rood, rouge, rot, rojo

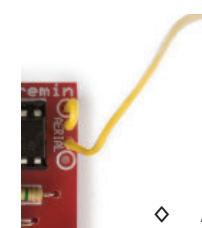


8 Push buttons



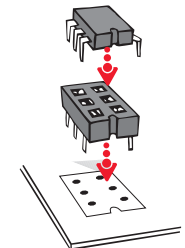
S1, S2

9 Aerial



Aerial

10 Chips



IC1: NE555
IC2: PIC12F508