

CASE CLAMP FOR VESA- AND DIN RAIL MOUNT

RB-Mount3



1. TABLE OF CONTENTS

1. Table of Contents
2. General information
3. Scope of delivery
4. Assembly
5. DIN rail mount
6. VESA mount
7. Other information
8. Support

2. GENERAL INFORMATION

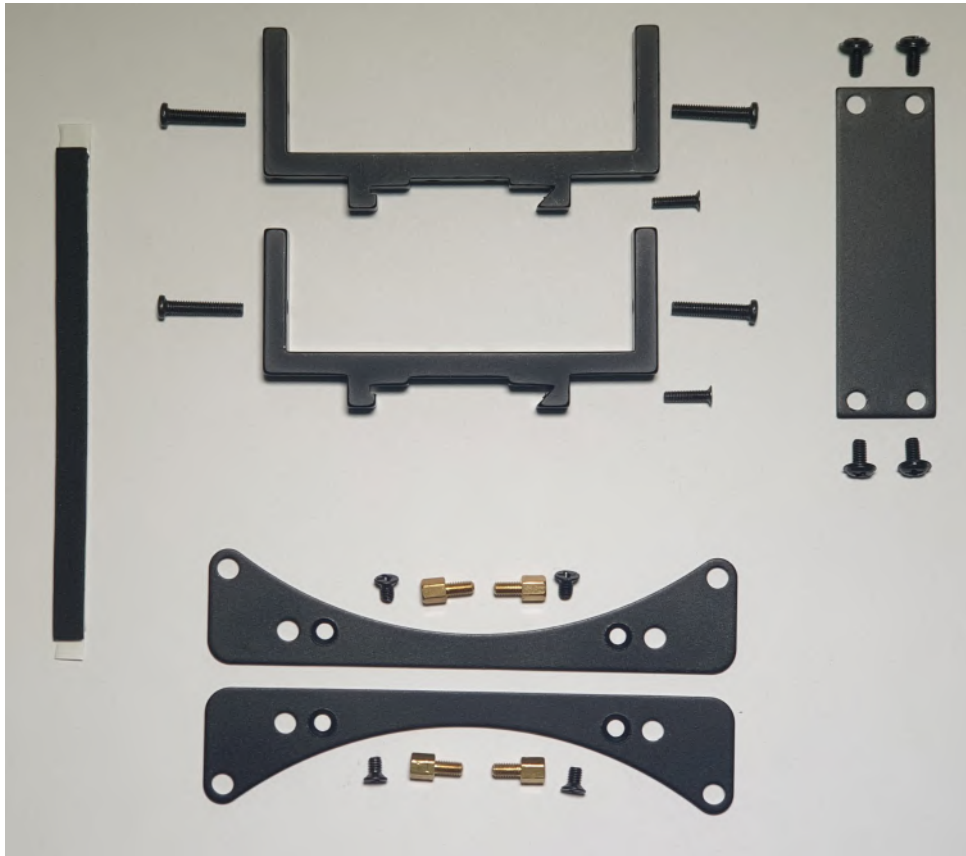
Dear customer,

Thank you for purchasing our product. In the following, we will show you which things should be noted during the use.

Should you encounter any unexpected problems, do not hesitate to contact us.

The housing clamp makes it possible to mount various small housings (e.g. single board computers, microcontrollers, etc.) on DIN rails (TH35) and VESA75 and VESA100 mounts.

3. SCOPE OF DELIVERY



- 2x case clamp
- 2x VESA adapter
- 1x mounting plate
- 1x adhesive rubber
- 4x M3 x 5mm standoff
- 4x screw M3 x 16 mm
- 4x screw M3 x 5 mm
- 4x countersunk screw M3 x 5 mm
- 2x countersunk screw M2.5 x 10 mm

ATTENTION:

The screws for mounting on the VESA device are not included due to different designs.

4. ASSEMBLY



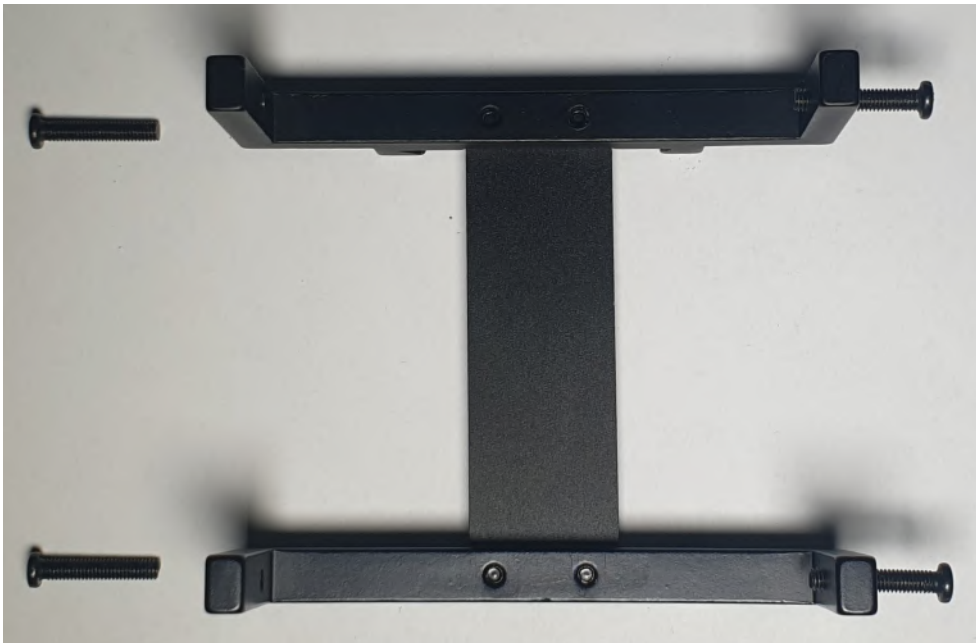
4.1

Use the M3 x 5 mm screws to attach the housing clamps to the mounting plate. Make sure that the DIN rail mounting device is mounted in the same direction for both housing clamps.



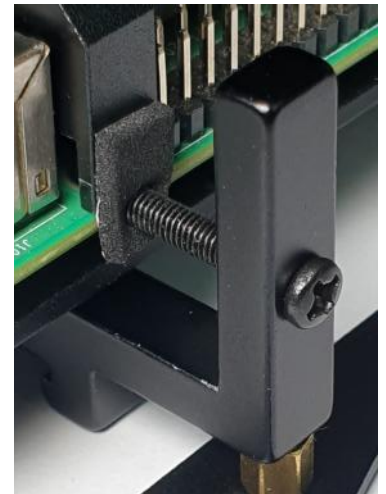
4.2

Screw the M2.5 x 10 mm countersunk screws into the threads provided on the DIN rail mounting device.



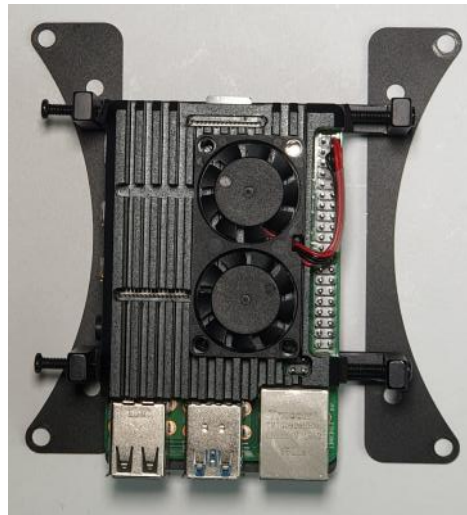
4.3

Screw the M3 x 16 mm screws into the housing clamps. Depending on your housing you can use either only 2 screws (see picture) or 4 screws.



4.4

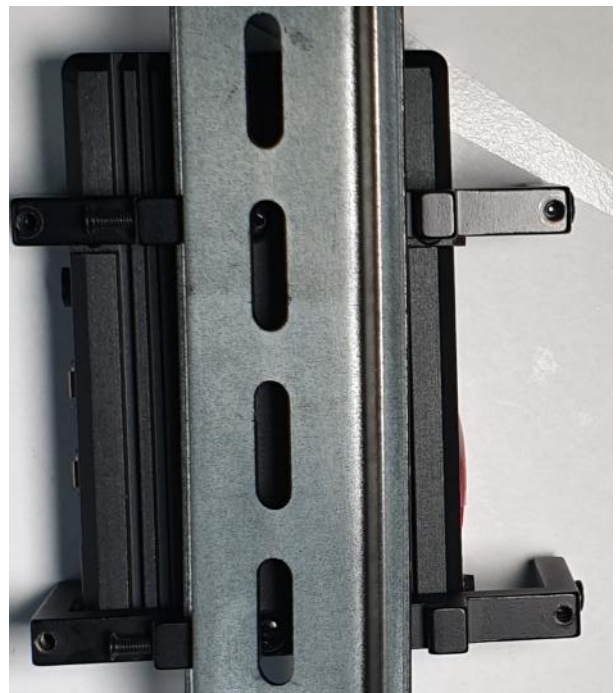
Now you have the possibility to place small pieces for protection at suitable places with the help of the self-adhesive rubber coating. To protect your housing from the screws, it is recommended to attach the adhesive pad to the housing at the height of the screw. This step is optional, if you do not use the rubber coating, the mounting can leave marks on your case, which, depending on the material, are similar to the damage shown in the picture below right.



4.5

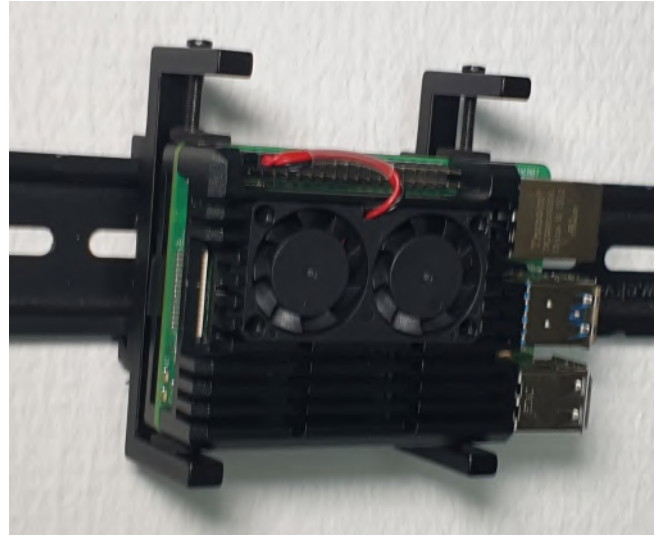
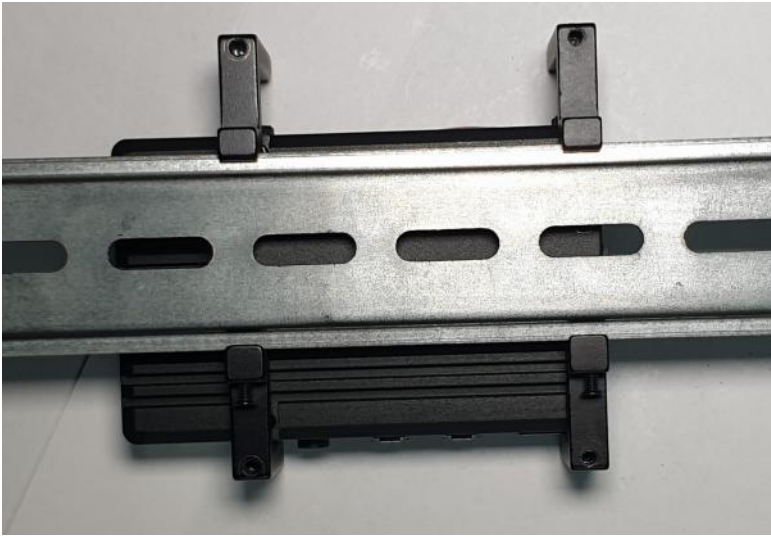
Now you can mount your housing as shown in the picture. The mounting of the case can vary from case to case.

5. DIN RAIL MOUNT



5.1

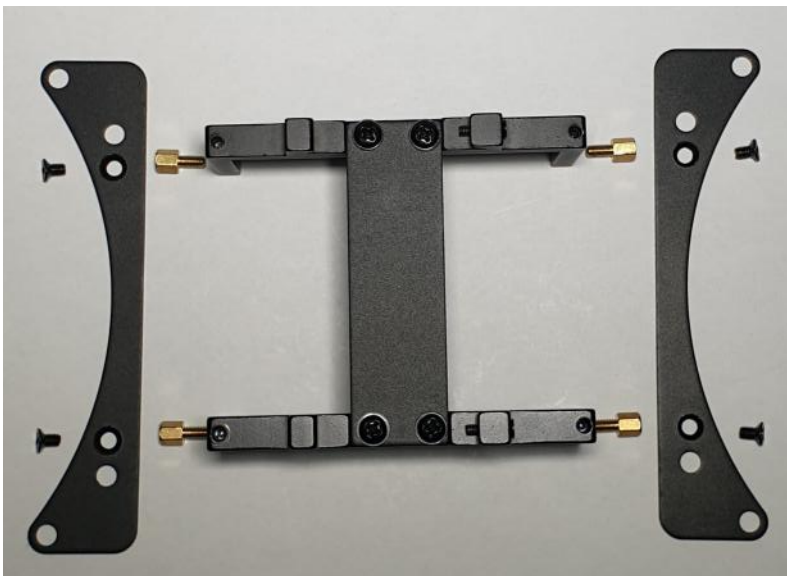
First, screw back the locking screws of the top-hat rail mounting so that they do not hinder the mounting. Afterwards, insert the housing clamps first with the side with the locking screws on the top-hat rail.



5.2

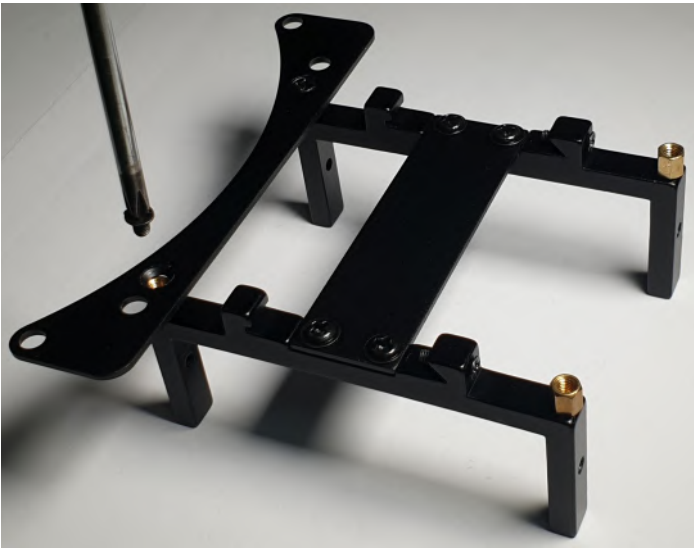
Now you can press the housing clamps onto the top-hat rail and lock them with the screws if necessary.

6. VESA MONTAGE



6.1

Screw the 4 M3 x 5 mm standoffs into the housing terminals from below.



6.2
Attach the VESA adapter to the previously screwed-in standoffs using 4 M3 x 5 mm countersunk screws. Make sure that the side of the VESA adapters with the countersink is facing upwards.



6.3
Now mount the housing clamp with the screws suitable to your VESA device (not included in the scope of delivery).

7. OTHER INFORMATION

Our Information and Take-back Obligations according to the German Electronic Law (ElektroG)



Symbol on Electrical and Electronic Products:

This crossed-out bin means that electrical and electronic products do not belong into the household waste. You must hand over your old appliance to a registration place. Before you can hand over the old appliance, you must remove used batteries and replacement batteries which are not enclosed by the device.

Return Options:

As the end user, you can hand over your old appliance (which has essentially the same functions as the new one bought with us) free of charge for disposal with the purchase of a new device. Small devices, which do not have outer dimensions bigger than 25 cm can be handed in for disposal independently of the purchase of a new product in normal household quantities.

1. Possibility of return at our company location during our opening hours

Simac Electronics Handel GmbH, Pascalstr. 8, D-47506 Neukirchen-Vluyn

2. Possibility of return nearby

We will send you a parcel stamp with which you can send us your old appliance free of charge. For this possibility, please contact us via e-mail at service@joy-it.net or via telephone.

Information about Package:

Please package your old appliance safe for transport. Should you not have suitable packaging material or you do not want to use your own material, you can contact us and we will send you an appropriate

8. SUPPORT

If any questions remained open or problems may arise after your purchase, we are available by e-mail, telephone and ticket support system to answer these.

E-Mail: service@joy-it.net

Ticket-system: <http://support.joy-it.net>

Telephone: +49 (0)2845 98469 – 66 (10 - 17 o'clock)

For further information visit our website:

www.joy-it.net