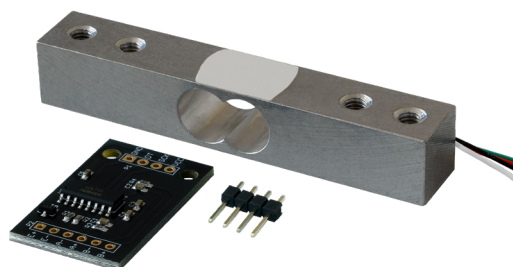


LOAD CELL 40 KG

with amplifier board



MAIN FEATURES

Model	HX711-40
Special feature	Integrated 24 bit A/D-Converter
Measuring range	up to 40 kg
Loadcell accuracy	$\pm 0.02\%$ FS
Items delivered	Load cell, amplifier board, pin header (4 pins)

With this load cell and amplifier board, you can build your own scale in conjunction with a microcontroller or single-board computer.

The amplifier board contains an HX711 24 bit A/D converter to convert the analogue signal of the load cell into a weight with high accuracy.

Due to its high popularity, there are many application examples online for this converter.

FURTHER SPECIFICATIONS

Supply voltage	2.6 - 5.25 V
Current consumption	< 1.5 mA
Interface	Serial; 2-wire
Dimensions PCB	34 x 20 x 3 mm
Dimensions load cell	80 x 15 x 14.2 mm
Cable length	approx. 200 mm

FURTHER INFORMATION

Weight	34 g
Article number	SEN-HX711-40
EAN	4250236829425
Customs tariff number	84239010

