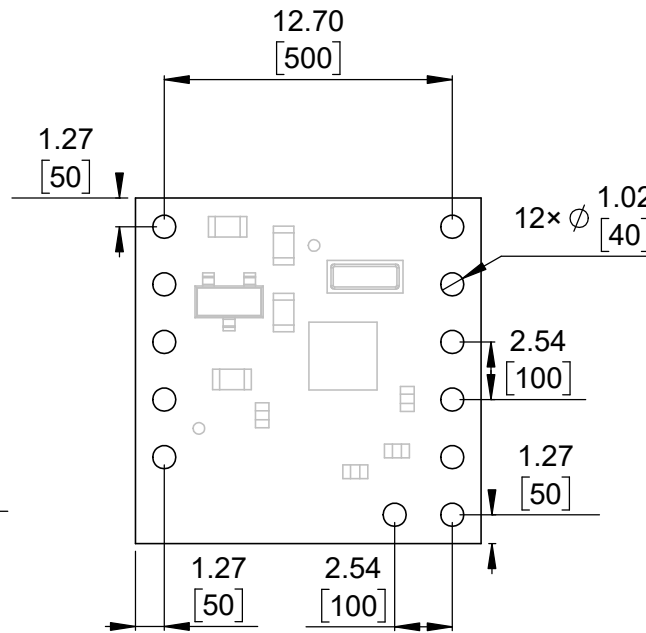
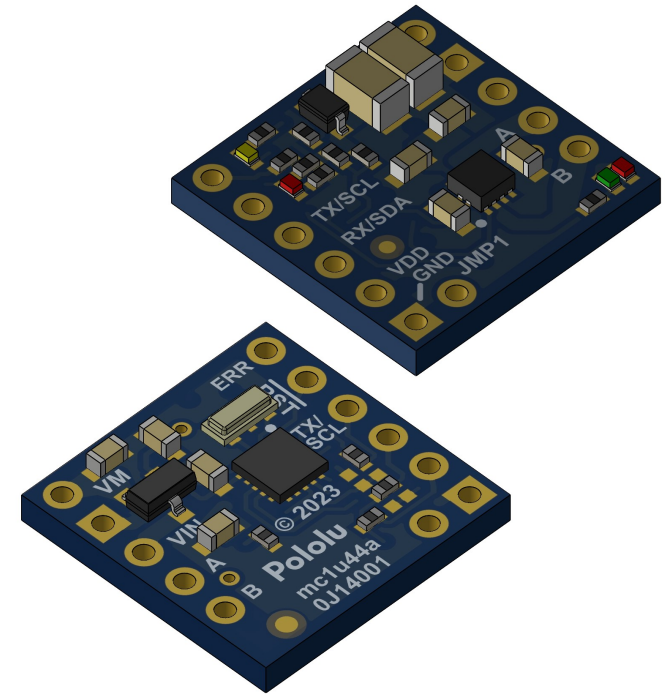


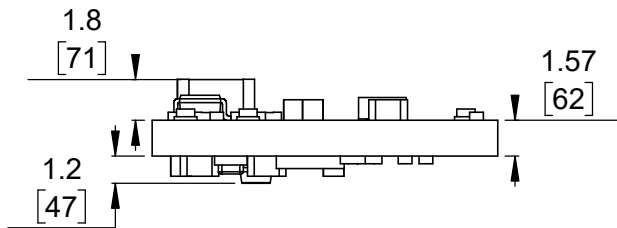
① Board dimensions (top view)
Scale 3:1



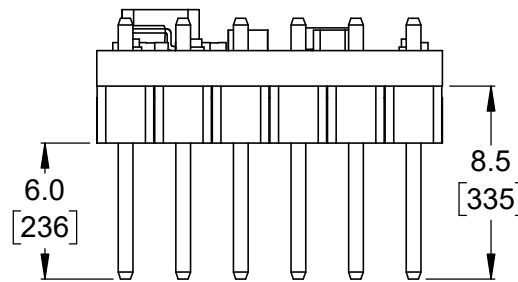
② Connector callouts (bottom view)
Scale 3:1



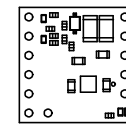
③ Isometric view
Scale 3:1



④ Profile
Scale 3:1




⑤ Profile with headers
Scale 3:1



⑥ Actual size
Scale 1:1

1. To get the specified scale, select 100% in print settings.
2. Drill location tolerance: ± 0.1 [± 5].
3. Board edge tolerance: ± 0.3 [± 10].

<https://www.pololu.com/category/302>

Name: Motoron M1x550 Single Motor Controller		Item number: 5074-5077
Drawing date: 8 June 2023	Dev code: mc1u44a	 © 2023 Pololu Corporation
Units: mm [mil]	Material: mixed	