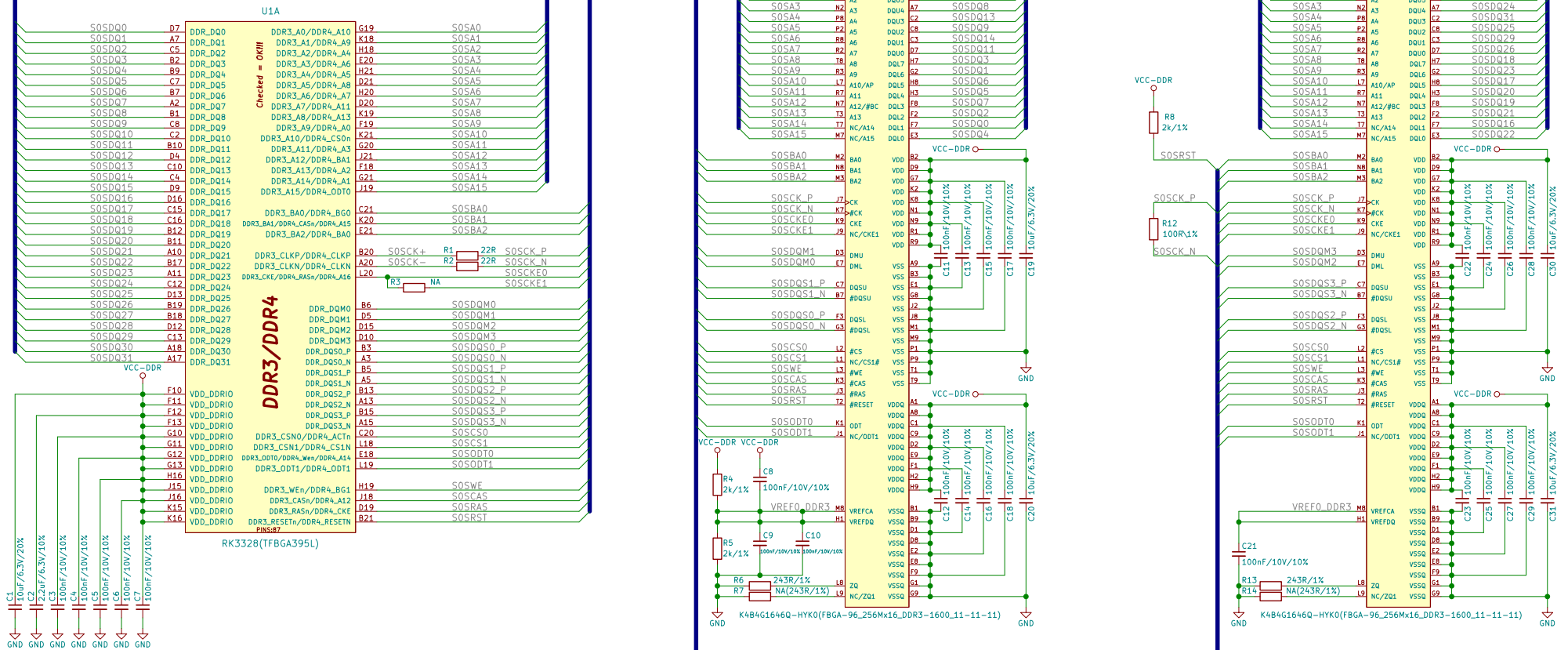


DDR3L:1GByte



Options:

1. Use 2(DDR3 256Mx16 Memory chips)x4Gb = 1GByte, i.e. 2xH5TQ4G63MFR-PBC(or K4B4G1646Q-HYK0) -> Default
2. Use 2(DDR3 512Mx16 Memory chips)x8Gb = 2GBytes, i.e. 2xH5TC8G63AMR-PBA(or K4B8G1646Q-MYK0)

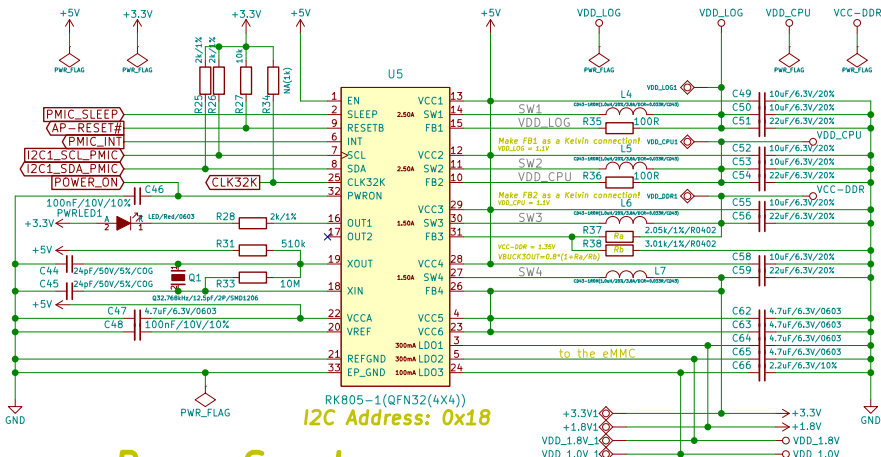
Note:

We have used a number of fully compatible, but different DDR3 memories due to supply unavailability. In such cases the memory part name in the schematic might remain outdated. It is recommended to always refer to the exact memory name printed on the component itself.



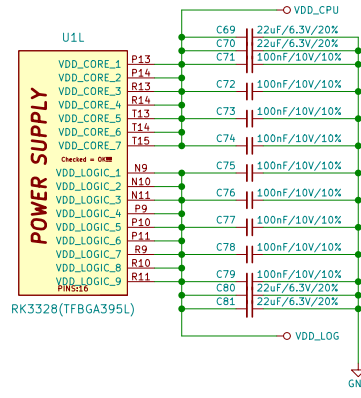
<c> 2021		OLIMEX LTD, Bulgaria	
Sheet: /		File: RK3328-SOM_Rev_A.sch	
Title: RK3328-SOM			
Size: A3	Date: 2021-02-26	Rev: A	
KiCad E.D.A. kicad 5.1.6-c6e7f7487ubuntu18.04.1		Id: 1/3	

- FID1 Fiducial
- FID2 Fiducial
- FID3 Fiducial
- FID4 Fiducial
- FID5 Fiducial
- FID6 Fiducial



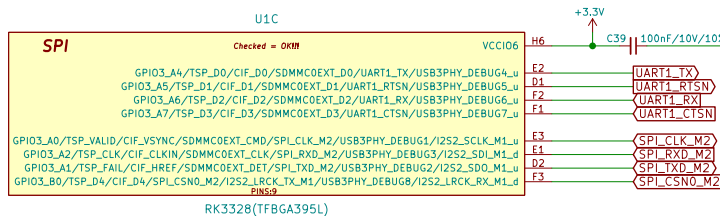
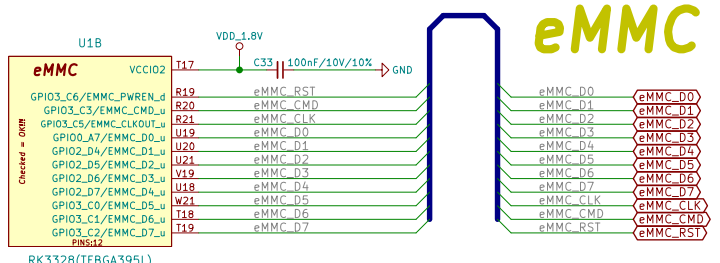
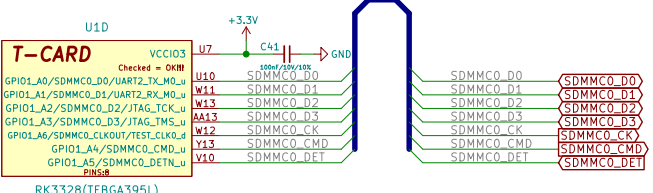
Power Supply

Core and Logic Power Supply



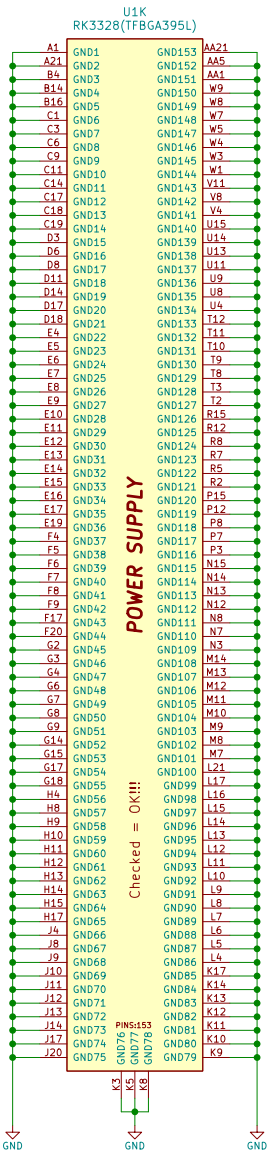
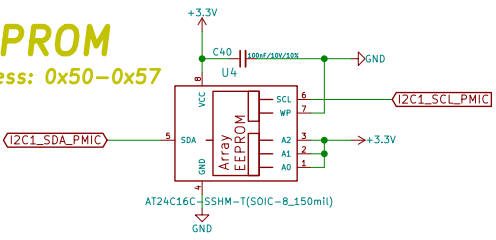
- Boot order:**
1. eMMC
 2. SPI Nor Flash
 3. SPI Nand Flash
 4. SDMMC card
 5. USB OTG (system code download)

T-Card



EEPROM

I2C Address: 0x50-0x57



OLIMEX

<c> 2021
OLIMEX LTD, Bulgaria
 Sheet: /Power Supply, T-Card and SPI-Flash/
 File: Power Supply, T-Card and SPI-Flash.sch
Title: RK3328-SOM

Size: A3	Date: 2021-02-26	Rev: A
KiCad E.D.A. kicad 5.1.6-cbe7f7487ubuntu18.04.1		Id: 2/3

