



# Argon ONE

The Most Versatile Raspberry Pi Case



# CLEAN STYLIZED DESIGN

**Argon ONE** is made for newbies, students, and young makers to get into computers, programming and electronics.

The sleek design of **Argon ONE** aims to complement existing fixtures and appliances inside your home whether may it be in your living room, bedroom, game room, or your workshop.



# SLEEK ALUMINUM ENCLOSURE

Made with polished aluminum alloy and modern Space Grey finish for stunning aesthetics and functionality.



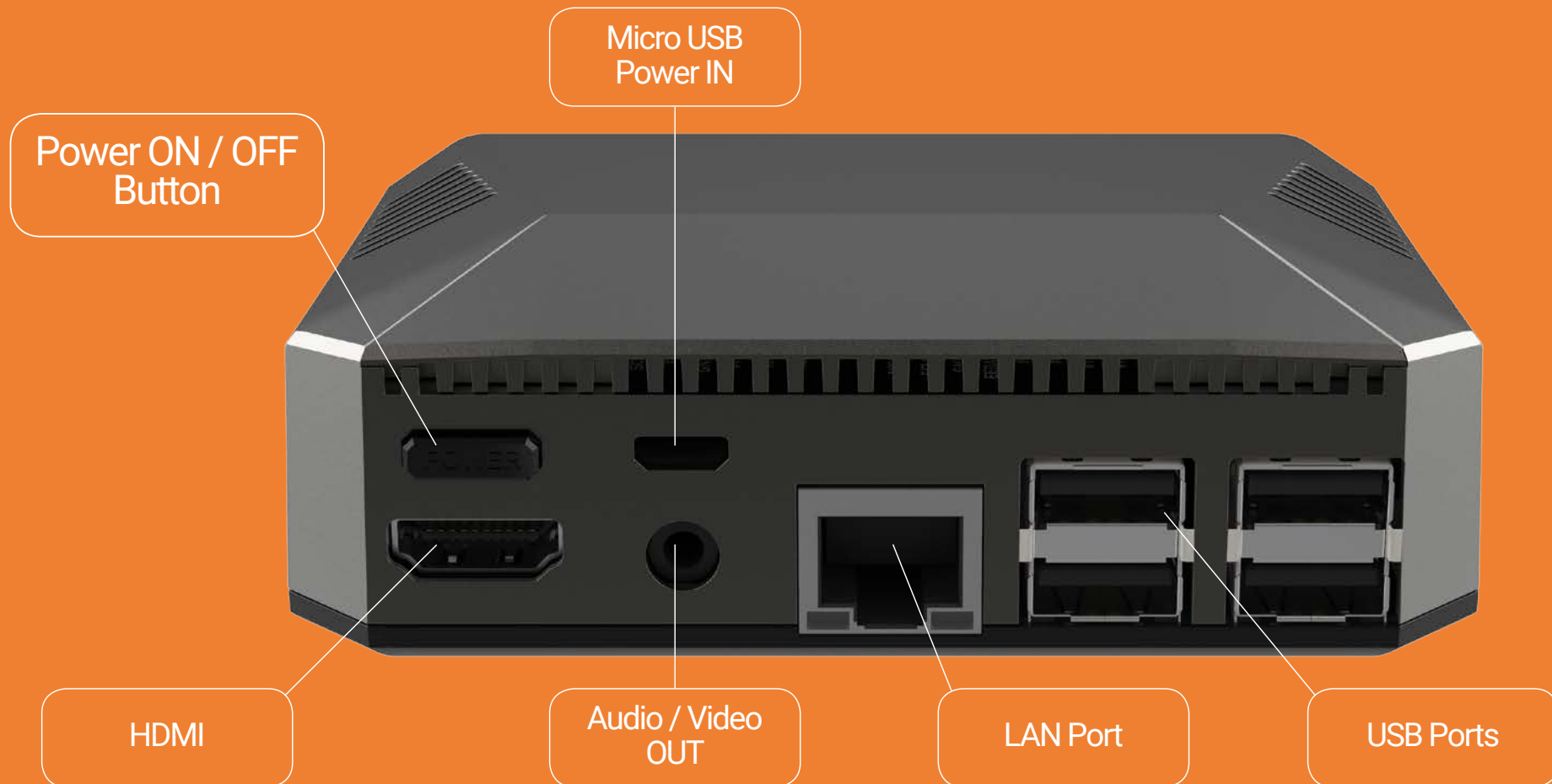
# PASSIVE AND ACTIVE COOLING

The case top acts as a passive cooling and a software controllable fan inside optimizes the temperature management and performance of the Raspberry Pi.



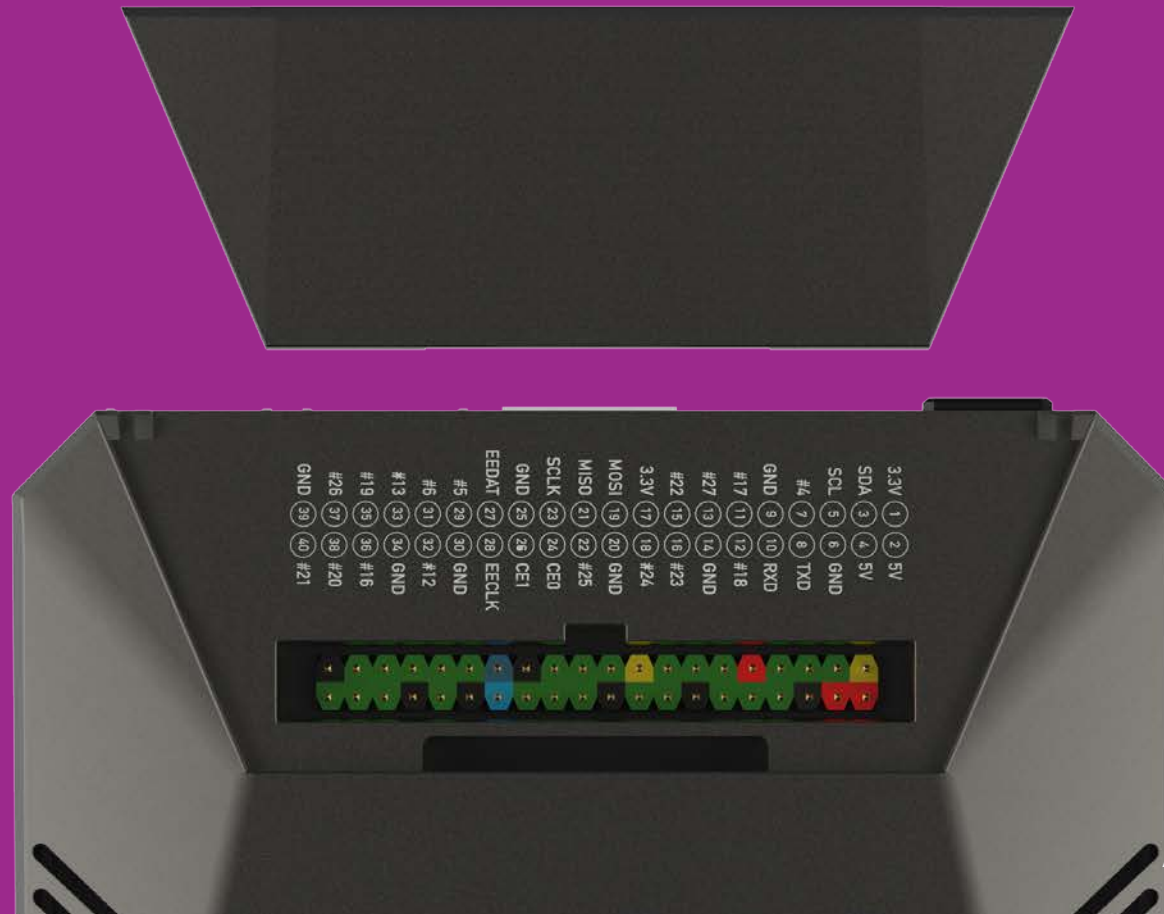
# PROPER SYSTEM SHUTDOWN

Built in features of **Argon ONE** prevents file & SD card damage. Power ON button also functions as Safe Shutdown, Reboot, and Forced Power Off.

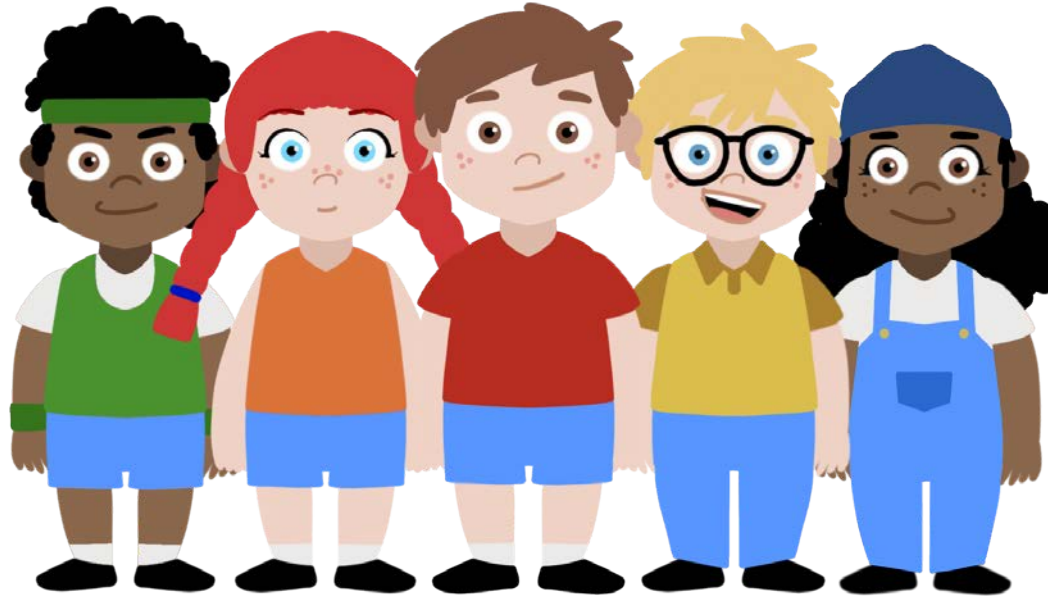


# MAGNETIC REMOVABLE TOP AND ACCESS TO GPIO

Neat and easy access to the color coded GPIO pins through the magnetic removal top adds pleasure to making projects.



# SHARE THE LOVE



**Argon**  
FORTY

salesinquiry: [sales@argon40.com](mailto:sales@argon40.com)  
customer care hotline: [cs@argon40.com](mailto:cs@argon40.com)  
[www.argon40.com](http://www.argon40.com)

