

Features

- Available sharp click feel with a positive tactile feedback
- Ultra-miniature and lightweight structure suitable for high density mounting
- Very economical with high reliability
- RoHS compliant*



The SDTM Series is currently available, although not recommended for new designs.

- Insert molding in the contact with special treatment prevents flux buildup during soldering and permits autodipping

SDTM Series SMD Tact Switch

Electrical Characteristics

Electrical Life

.....50,000 cycles min. for 260 g
500,000 cycles min. for 100 g, 160 g

RatingDC 12 V, 50 mA

Contact Resistance.....100 mohms max.

Insulation Resistance...100 Mohms min.,
DC 500 V min.

Dielectric Strength

.....AC 250 V for 1 minute

Contact Arrangement...1 pole 1 position

Environmental Characteristics

Operation Force.....100 g, 160 g, 260 g

Tolerance±50 g

Stop Strength..Place the switch vertical,
a static load of 3 kg shall be
applied in the direction of actuator
operation for a period of 15 seconds

Stroke.....0.25 mm (+0.2 mm, -0.1 mm)

Temperature Range.....-25 °C to +70 °C

Vibration TestMIL-STD-202F,
Method 201A

Frequency10-50-10Hz/1minute

Directions.....X,Y,Z 3 mutually per
pendicular directions

Time.....2 hours each direction,
high reliability

Shock TestMIL-STD-202F,
Method 213A, Condition A

Gravity.....50 g (peak value), 11 msec.

Directions/Time.....6 sides and 3 times
in each direction

Physical Characteristics

Cover Materials.....Steel, tin plated

Base MaterialsThermoplastic Nylon
FG 101, UL94V-0

Actuator Materials.....Thermoplastic
Nylon UL94V-0

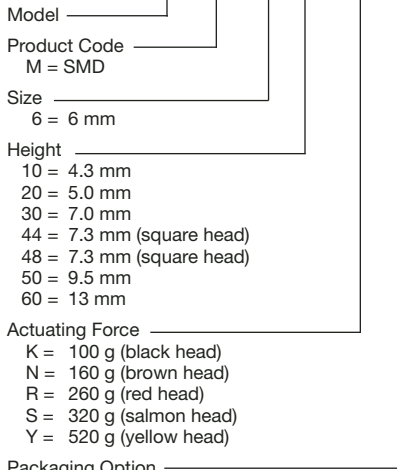
ColorBlack, brown, red

Contact Disc. Materials.....Phosphor
bronze with silver cladding

Terminal MaterialsBrass with silver
cladding

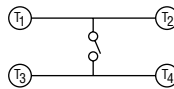
How To Order

SDT M - 6 10 - K TR



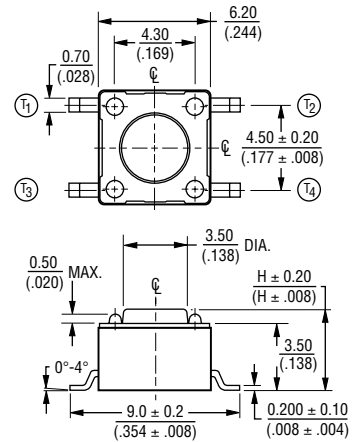
*not applicable to Model 660.

CIRCUIT DIAGRAM

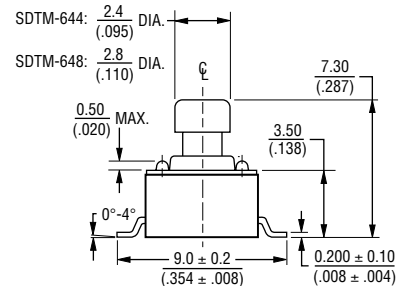
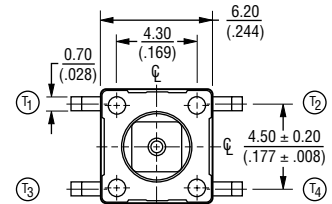


Product Dimensions

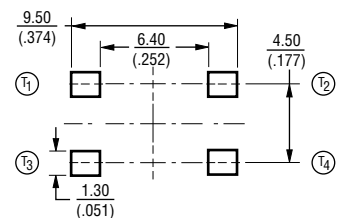
SDTM-610/620/630/650/660



SDTM-644/648



RECOMMENDED PCB LAYOUT



DIMENSIONS: $\frac{MM}{(IN)}$

TOLERANCES: $\frac{0.2}{(.008)}$ EXCEPT WHERE NOTED.

*RoHS Directive 2002/95/EC Jan 27 2003 including Annex.
Specifications are subject to change without notice.
Customers should verify actual device performance in their specific applications.

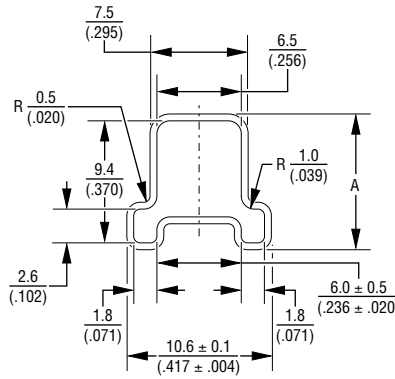
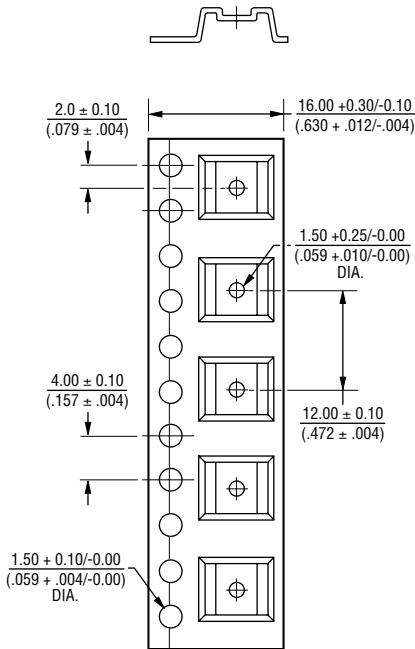
SDTM Series SMD Tact Switch

BOURNS®

Packaging Specifications

SDTM-610/620/630/644/648/650(TR)

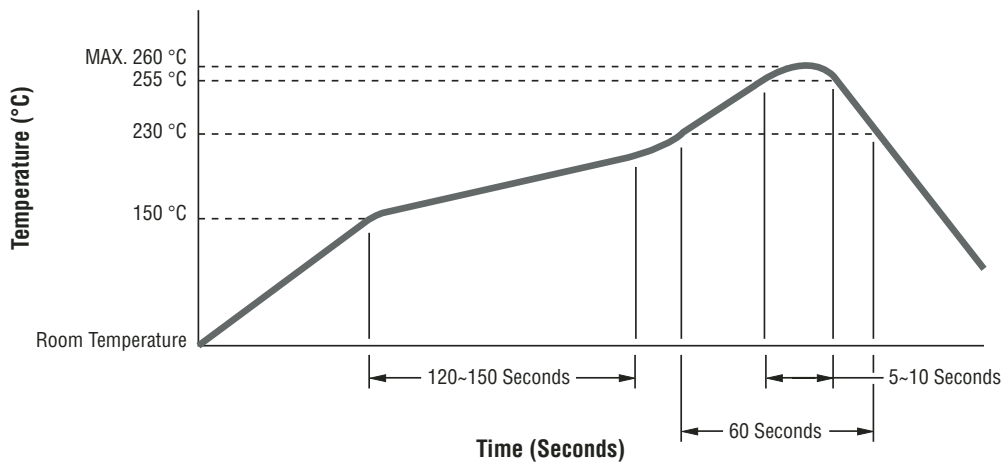
SDTM-610/620/630/644/648/650/660(TUBE)



MODEL NO.	DIM. A
SDTM-630, 644, 648	$\frac{10.40}{(.409)}$
SDTM-650, 660	$\frac{15.9 \pm 0.1}{(.626 \pm .004)}$
SDTM-610, 620	$\frac{5.5}{(.217)}$

DIMENSIONS: $\frac{MM}{(IN)}$
 TOLERANCES: $\frac{0.2}{(.008)}$ EXCEPT WHERE NOTED.

Reflow Soldering Profile



REV. 08/06

Specifications are subject to change without notice.
 Customers should verify actual device performance in their specific applications.