

SPECIFICATIONS:

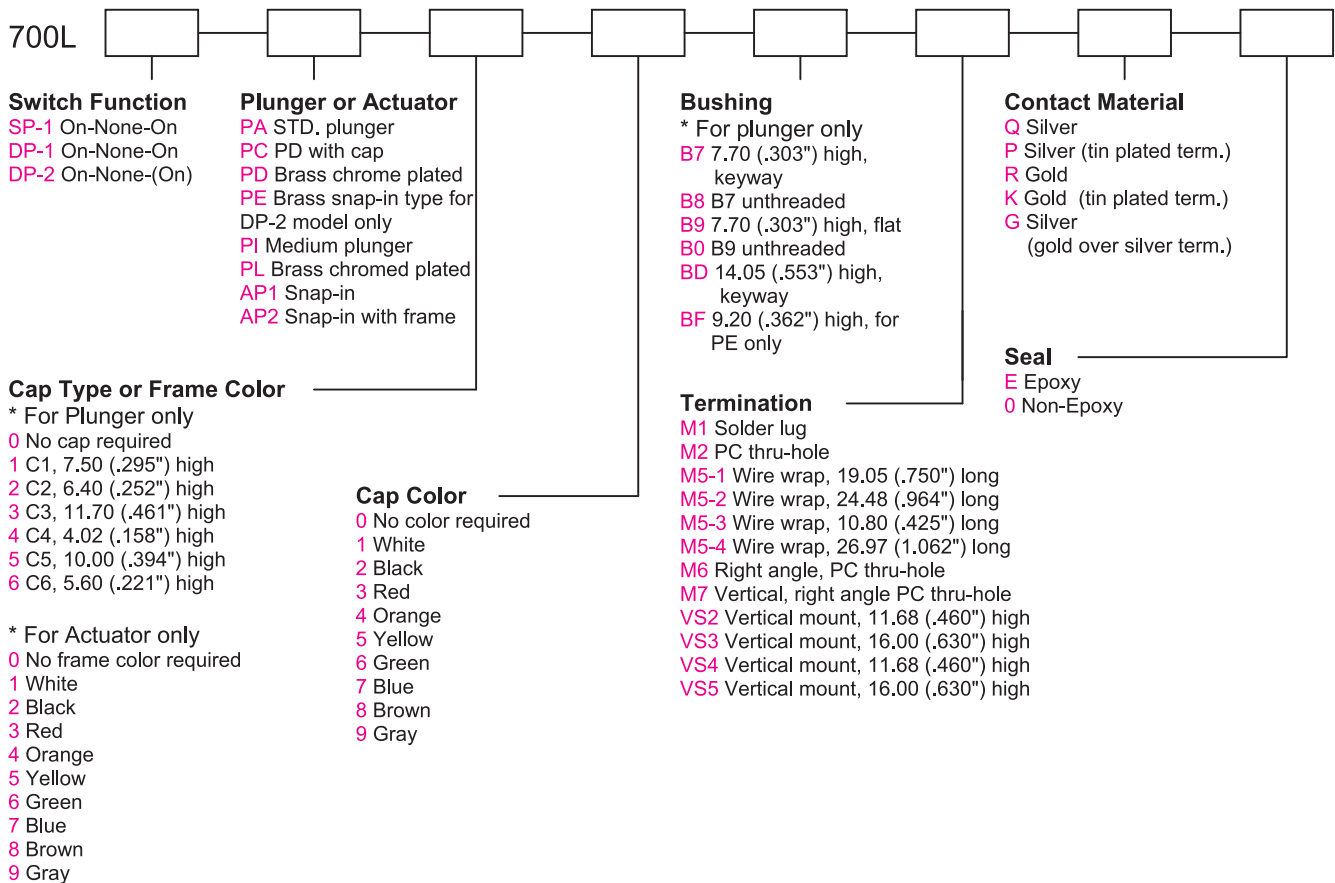
CONTACT RATING: Refer to "Contact Material Options" for more info.
ELECTRICAL LIFE: 50,000 make and break cycles at full load.
CONTACT RESISTANCE: 10mΩ max. initial @2-4VDC
INSULATION RESISTANCE: 1,000MΩ min.
DIELECTRIC STRENGTH: 1,500V RMS @ sea level.
OPERATION TEMPERATURE: -30°C to + 85°C.

MATERIALS:

CASE: Diallyl phthalate(DAP)(UL 94V-0).
PLUNGER: Polybutylene terephthalate (PBT) or Nylon (UL 94V-0).
FRAME: Nylon 6/6 (UL 94HB), black standard.
BUTTON & CAP: Nylon 6/6 or ABS, black standard.
BUSHING: Brass, nickel plated.
HOUSING: Stainless steel.
TERMINAL SEAL: Epoxy.

If your preferred product configuration is not shown, please contact our sales representative for custom design.

HOW TO ORDER SYSTEM



Series 700L

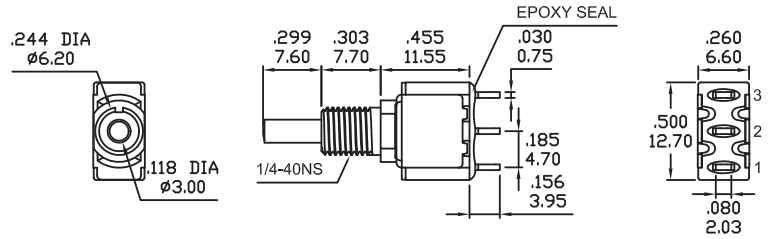
Alternate Acting Pushbutton Switches

SPDT



Model No.	Switching Position		
SP-1	ON	NONE	ON
Term. Comm.	2-3	OPEN	2-1

Schematic

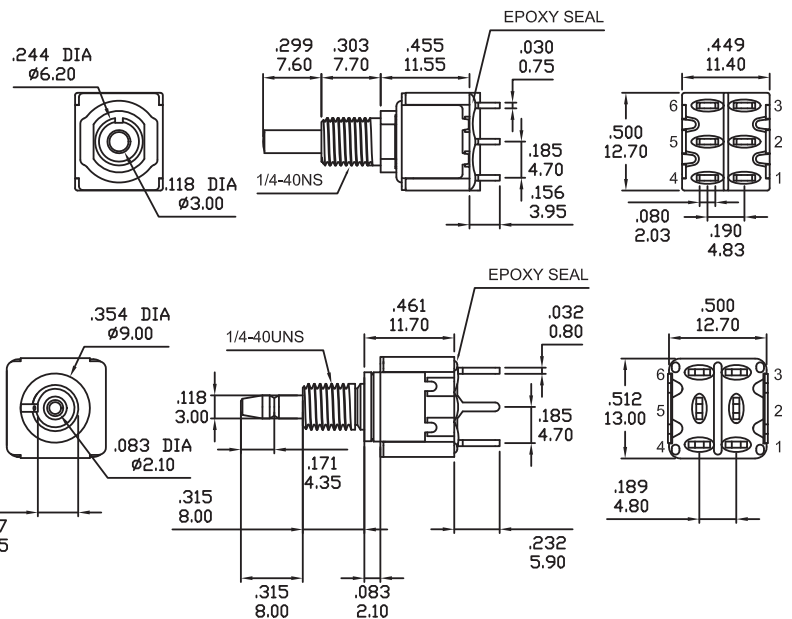
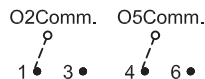


DPDT



Model No.	Switching Position		
DP-1	ON	NONE	ON
Term. Comm.	2-3,5-6	OPEN	2-1,5-4

Schematic



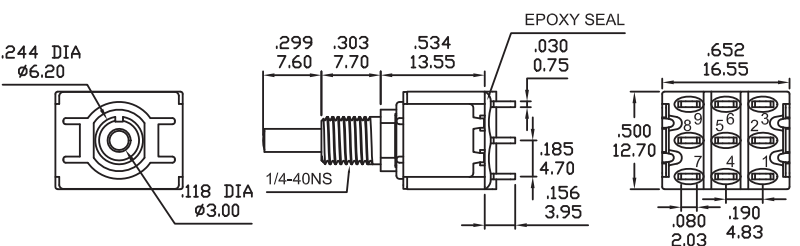
Part No. 700L-DP2-PE00BFM2xE, "x" Plating code

3PDT



Model No.	Switching Position		
3P-1	ON	NONE	ON
Term. Comm.	2-3,5-6 8-9	OPEN	2-1,5-4 8-7

Schematic

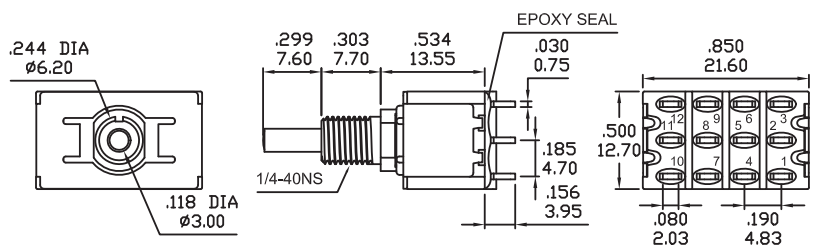
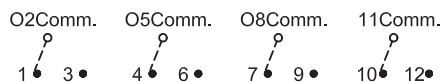


4PDT



Model No.	Switching Position		
4P-1	ON	NONE	ON
Term. Comm.	2-3,5-6 11-12	OPEN	2-1,5-4 11-10

Schematic

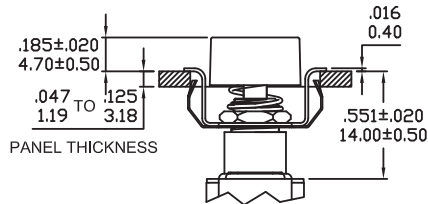
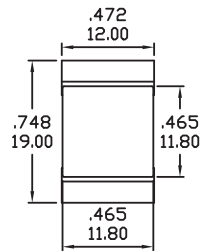


Series 700L

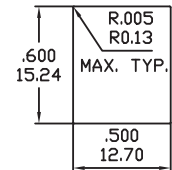
Alternate Acting Pushbutton Switches

ACTUATOR OPTIONS FOR SNAP-IN FRONT MOUNT

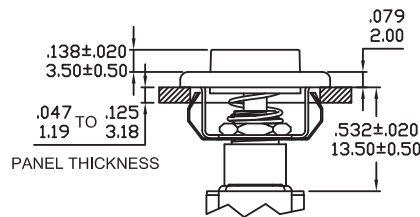
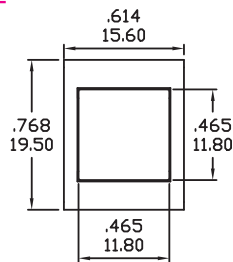
AP1



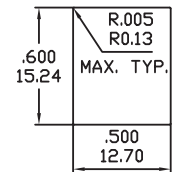
PANEL MOUNTING



AP2 WITH FRAME

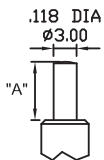


PANEL MOUNTING

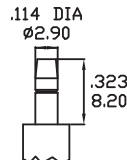


PLUNGER OPTIONS (SP-1 & DP-1 MODEL)

PL



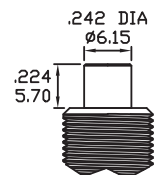
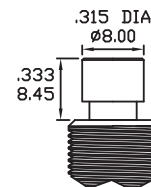
OPTION CODE	DIM "A"
PA	.299(7.60)
PI	.244(6.20)



* Plunger material: Brass Nickel Plated

PC

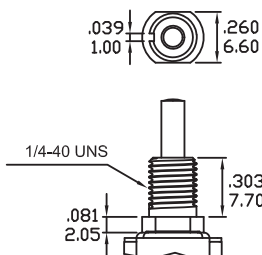
PD



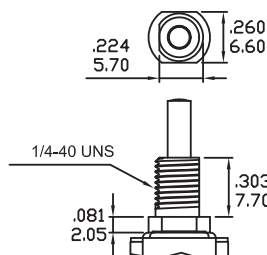
* Plunger material: Brass Chrome Plated
* PC,PD must configure with BD bushing

BUSHING OPTIONS (SP-1 & DP-1 MODEL)

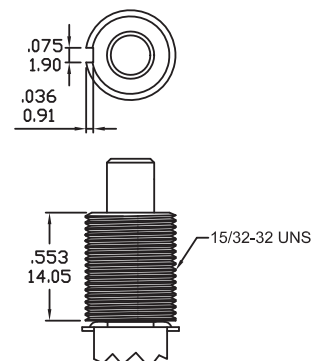
B7 THD STD
B8 NON-THD



B9 THD STD
B0 NON-THD

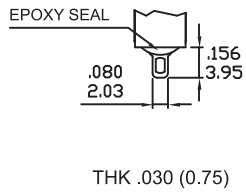


BD

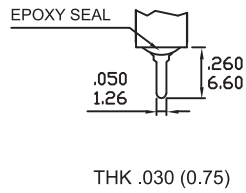


TERMINATION OPTIONS (SP-1 & DP-1 MODEL)

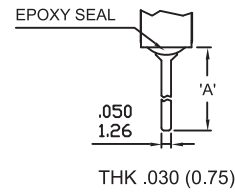
M1 STD. SOLDER LUG



M2 PC-THRU HOLE

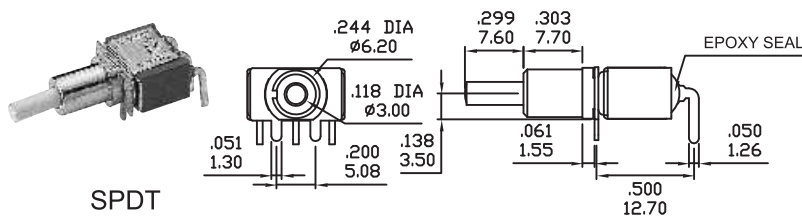


M5 WIRE WRAP

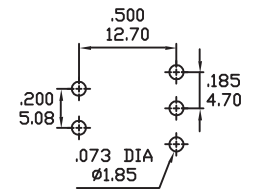


OPTION CODE	DIM.'A'
M5-1	.750(19.05)
M5-2	.964(24.48)
M5-3	.425(10.80)
M5-4	1.062(26.97)

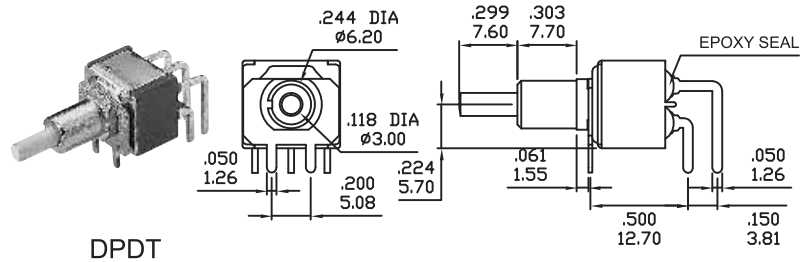
M6



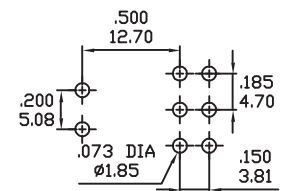
P.C.MOUNTING



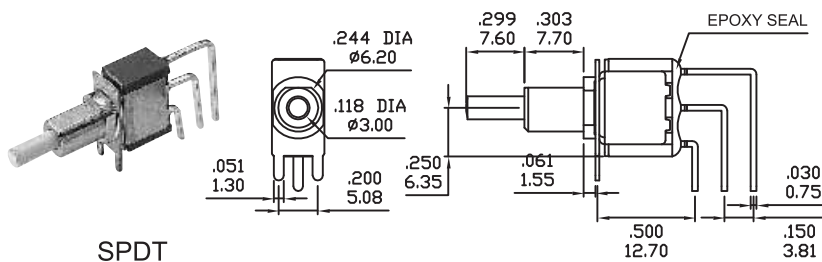
M6



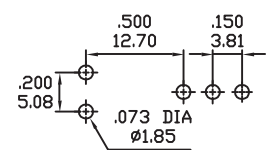
P.C.MOUNTING



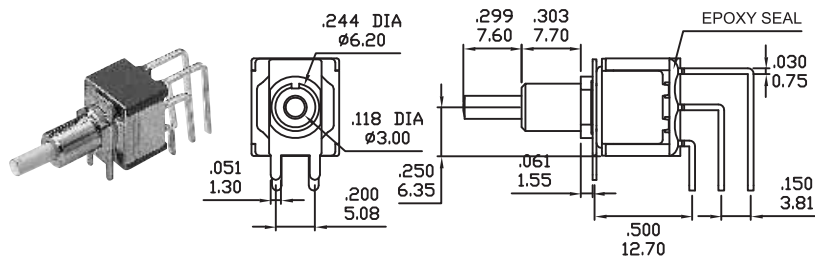
M7



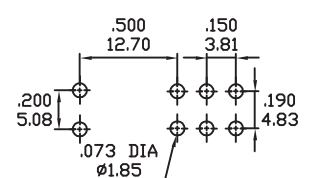
P.C.MOUNTING



M7

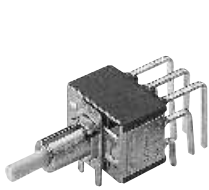


P.C.MOUNTING

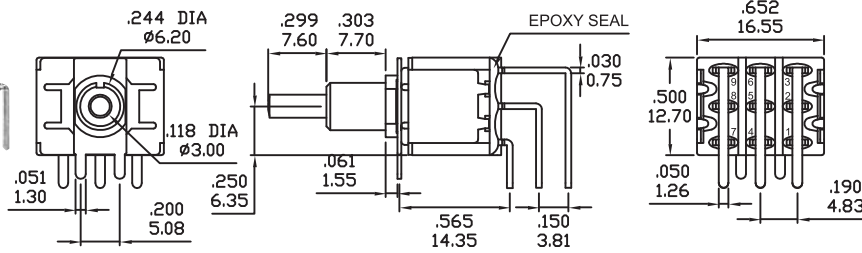


TERMINATION OPTIONS

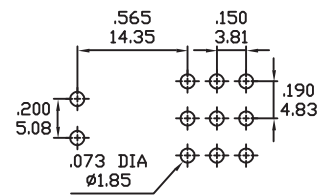
M7



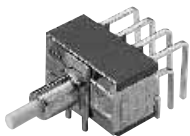
3PDT



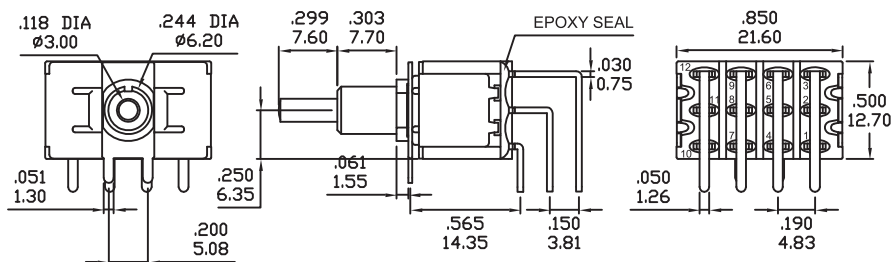
P.C.MOUNTING



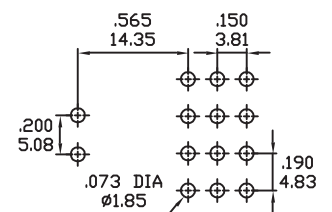
M7



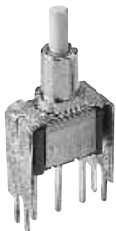
4PDT



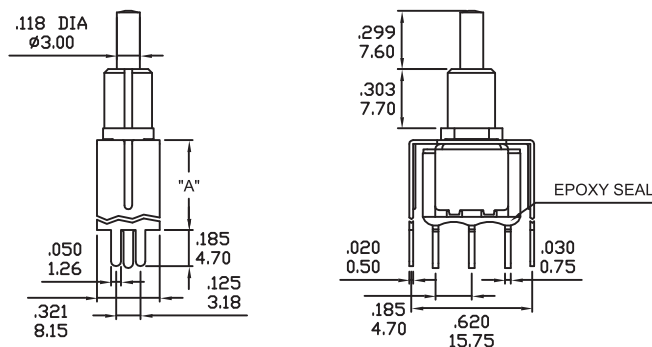
P.C.MOUNTING



VS2-VS3

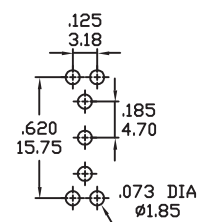


SPDT

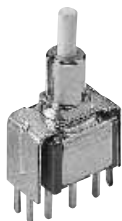


OPTION CODE	DIM.'A'
VS2	.461 11.70
VS3	.630 16.00

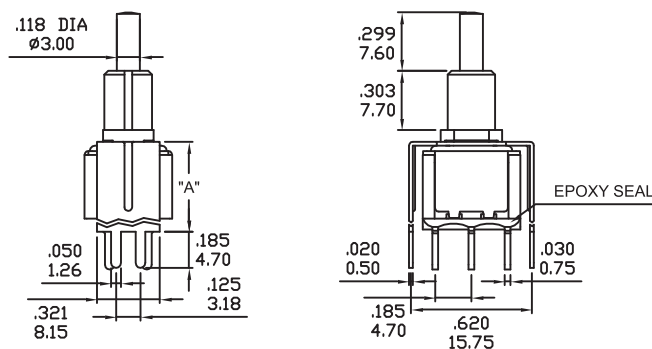
P.C.MOUNTING



VS2-VS3

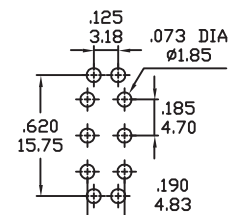


DPDT



OPTION CODE	DIM.'A'
VS2	.461 11.70
VS3	.630 16.00

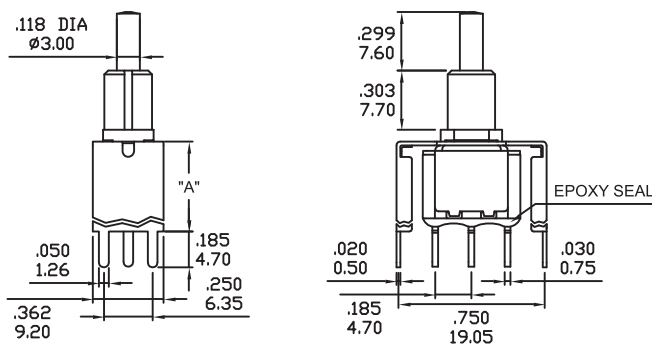
P.C.MOUNTING



VS4-VS5

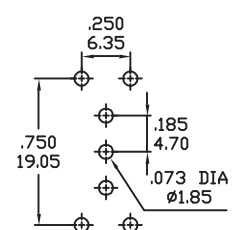


SPDT



OPTION CODE	DIM.'A'
VS4	.461 11.70
VS5	.630 16.00

P.C.MOUNTING

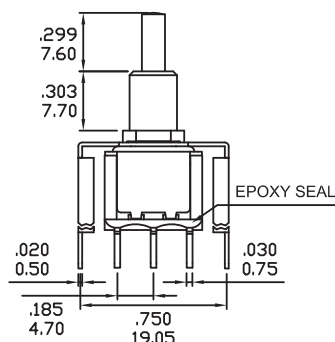
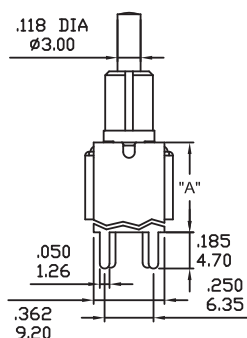


TERMINATION OPTIONS

VS4-VS5

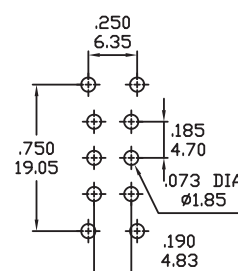


DPDT



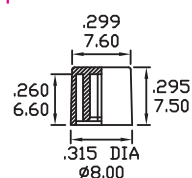
OPTION CODE	DIM.'A'
VS4	.461 11.70
VS5	.630 16.00

P.C.MOUNTING

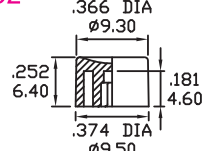


PLUNGER CAPS

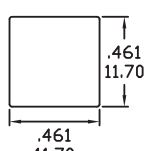
C1



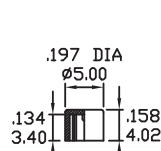
C2



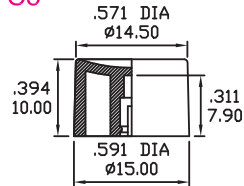
C3



C4

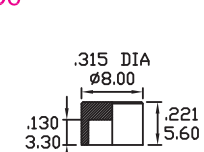


C5



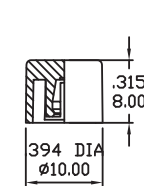
For PL plunger only

C6



For PD plunger only

C7



For PL plunger only

CAP AND FRAME COLORS	
1	White
2	Black
3	Red
4	Orange
5	Yellow
6	Green
7	Blue
8	Brown
9	Gray

MATERIAL: ABS for C1-C5.
MATERIAL: Brass for C6
Chrome or nickel plated.

CONTACT MATERIAL OPTIONS

Coding	Contact Material	Terminal Plating	Rating	Agency Approvals
Q	Silver ¹	Silver plated ⁶	6Amps @ 125VAC or 28VDC 3Amps @ 250VAC	
P		Tin plated ^{5 8}		
R	Gold ²	Gold plated ⁴	0.4VA max @ 20V max (AC or DC)	
K		Tin plated ^{5 7}		
G	Silver ¹	Gold over silver ³	6Amps @ 125VAC or 28VDC 3Amps @ 250VAC	

1. Movable Contact: Coin silver, silver plated.
2. Movable Contact: Copper alloy with gold plated over nickel plated.
3. Terminals: Silver plated with outer layer in gold plating.
4. Terminals: Copper alloy, with gold plated over nickel plated.
5. Outer Terminals: Copper alloy with pure tin plated.
6. Terminals: Copper alloy, silver plated.
7. Terminal Contact: Gold plated over nickel plated.
8. Terminal Contact: Palladium nickel alloy (or Silver) plated.

* P, K not available with M1 termination.