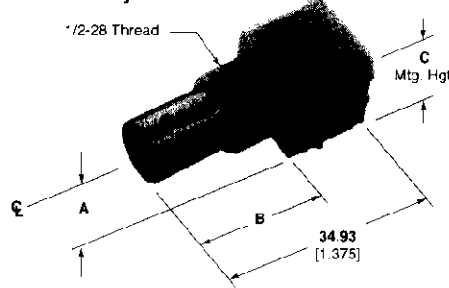


**BNC Connectors, 50 Ohm (Continued)**

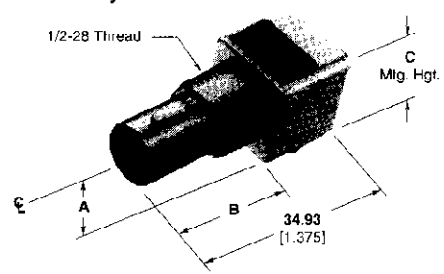
**Right-Angle Jacks  
PC Board/Panel Mount**

Body — Nickel  
Dielectric — Polymethylpentene

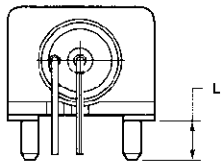
**VALOX Body**



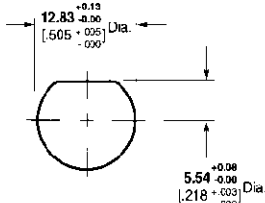
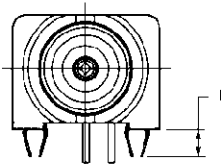
**Metal Body**



**Mounting Post Style**



**Compliant Post**



Maximum Panel Thickness 6.1 [240]

**Recommended Panel Cutout**

Body Material	Center Contact Plating	Dimensions			Part No.				
		A	B	C	Without Mounting Posts	With Mounting Posts	L	With Compliant Posts	L
VALOX White	Tin-Lead	8.59 .338	21.21 .835	15.88 .625	226990-1	227161-1	3.48 .137	—	—
	Gold1	8.59 .338	21.21 .835	15.88 .625	226990-3	227161-3	3.48 .137	—	—
	Gold2	8.59 .338	21.21 .835	15.88 .625	—	1-227161-4	—	—	—
	Tin-Lead	6.91 .272	21.21 .835	13.18 .519	226990-7	—	—	—	—
VALOX Black	Gold1	6.91 .272	21.21 .835	13.18 .519	—	227161-7	3.48 .137	414684-1	4.70 1.85
	Tin-Lead	8.59 .338	21.21 .835	15.88 .625	226990-2	227161-2	3.48 .137	—	—
	Gold1	8.59 .338	21.21 .835	15.88 .625	226990-6	227161-6	3.48 .137	—	—
	Gold1	6.91 .272	21.21 .835	13.18 .519	—	227161-9	3.48 .137	415218-1	2.79 .110
Metal	Gold1	6.17 .243	21.21 .835	11.68 .460	—	415046-1	—	415046-2	—
	Tin-Lead	8.26 .325	20.83 .820	15.88 .625	227433-1	227661-1	3.48 .137	—	—
	Gold1	8.26 .325	20.83 .820	15.88 .625	227676-1	227677-1 227677-2*	3.48 .137	222785-1	3.89 .153
	Gold1	6.91 .272	20.83 .820	12.70 .500	—	413879-1	3.48 .137	—	—
High Temp. Housing	Gold1	6.91 .272	20.83 .820	12.70 .500	—	413879-2	3.48 .137	—	—
	Gold1	6.91 .272	21.21 .835	13.18 .519	—	—	—	415218-5	—

\*IR reflow compatible

**Plating:**

Gold1 — 0.00076 [0.00030] thick

Gold2 — 0.00127 [0.00050] thick

**Note:** If an Insulating Bushing is required see part number 330620 and Panel Cutout on page 54.

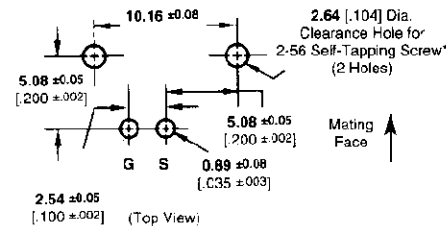
**Lockwasher and Jam Nut**



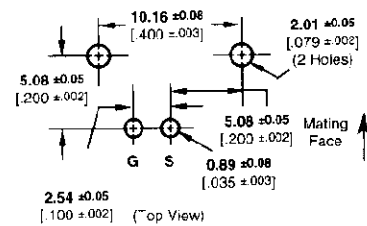
Part No.  
1-329632-2

Part No.  
1-329631-2

**Without Mounting Posts**



**With Mounting Posts**



**Recommended PC Board Layouts**

\* Screw for panel thickness of 2.38 [3/32] or greater Part No. 221108-2.  
Screw for panel thickness of less than 2.38 [3/32] Part No. 221108-4.