
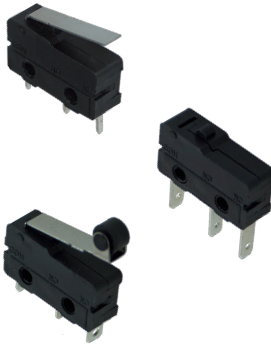


# MINIATURE SWITCHES

## V4 Type Sub Miniature Microswitches 5A

- Rating 5A switching S.P.D.T. (10A to order)
- Long life coil spring mechanism
- Solder, PCB, 90° PCB mounting or 2.8mm quick connect terminals
- Button, lever or roller actuators
- Anti Solder Wicking
-  US approved

CSM405



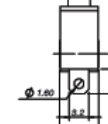
### SPECIFICATION

Rating	5A/250VAC (10A to order)
Contact resistance	50mΩ max
Insulation strength	100MΩ min/500VDC
Electrical Life	50,000 operations min
Temperature range	-10°C to +125°C
Material	Case PBT Button PPS Actuator Stainless steel Contacts AgNi10
Terminals	Brass alloy H65 Silver Plated

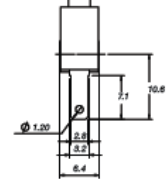
ACTUATOR STYLE	OPERATING FORCE MAX	RELEASE FORCE MAX	OPERATING POSITION	PRE TRAVEL MAX	MOVEMENT DIFFERENTIAL	OVER TRAVEL MIN
CSM40500- Button	1.5N	0.3N	8.6 ± 0.4mm	0.8mm	0.2mm	0.5mm
CSM40510- Short Lever	0.25N	0.04N	8.9 ± 1mm	4.6mm	0.8mm	0.8mm
CSM40511- Short Upturned Lever						
CSM40520- Standard Lever	0.25N	0.06N	8.9 ± 1mm	5mm	0.8mm	1.2mm
CSM40530- Long Lever	0.2N	0.03N	9.6 ± 2mm	7.5mm	1.5mm	1.6mm
CSM40540- Simulated Roller	0.25N	0.04N	12 ± 1.2mm	4.7mm	0.8mm	1.2mm
CSM40550- Standard Roller	0.25N	0.04N	15.2 ± 1mm	4.8mm	0.9mm	1.2mm
CSM40570- Wave Lever						
CSM40580- Extra Long Lever	0.1N	0.02N	9.8 ± 1.5mm	8mm	2.5mm	1.5mm
CSM40581- Extra Long Stepped Lever						

### Types of Terminal:

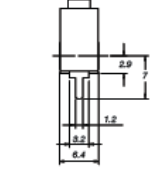
Suffix A = Solder



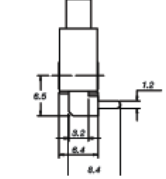
Suffix E = 2.8 quick connect



Suffix F = PCB mount

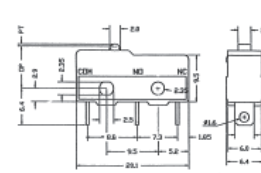


Suffix G = 90° PCB mount

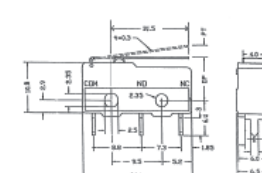


### Types of Actuator:

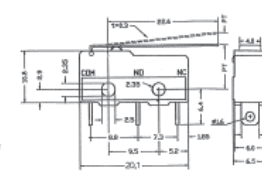
Button



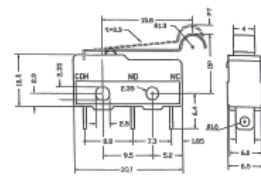
Short Lever



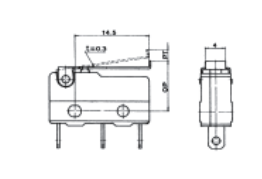
Long Lever



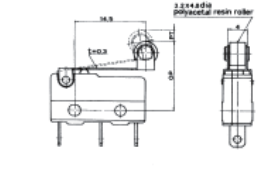
Simulated Roller



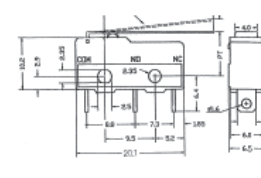
Short Upturned Lever



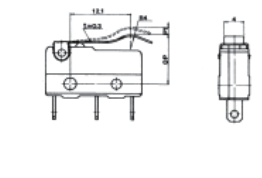
Standard Roller



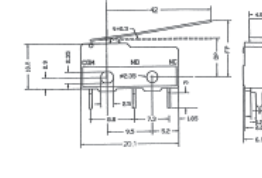
Standard Lever



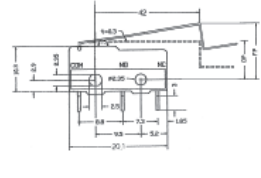
Wave Lever



Extra Long Lever



Extra Long Stepped Lever



CSM405 Series Replaces CSM35 Series  
 CSM405 Series Terminal Suffix E, F, G Replaces CSM35 Series Terminal Suffix B, C, D respectively  
 CSM405 Series Lever Options 30, 40, 11, 20, 41, 81 Replaces CSM35 Series Lever Options 20, 30, 40, 80, 70, 90  
 Example CSM40530E replaces CSM3520B  
 Example CSM40511G replaces CSM3540D  
 Example CSM40541F replaces CSM3570C  
 Example CSM40540E replaces CSM3530C  
 Example CSM40520E replaces CSM3580B  
 Example CSM40581G replaces CSM3590D