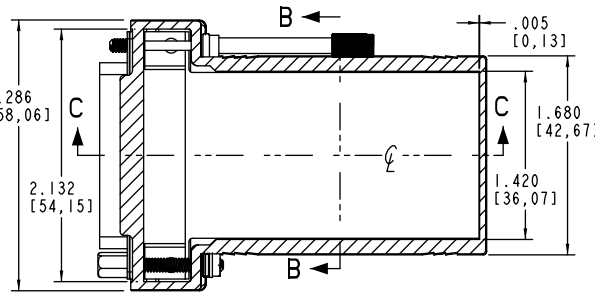
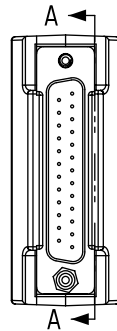
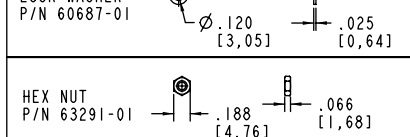
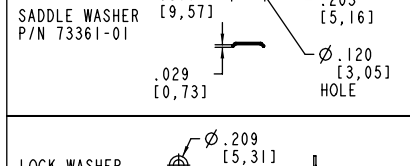
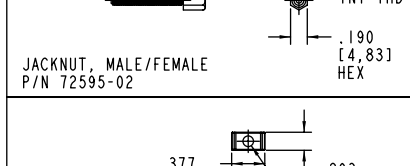
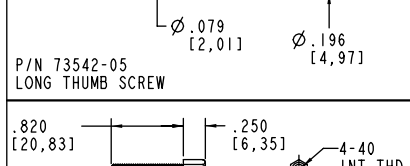
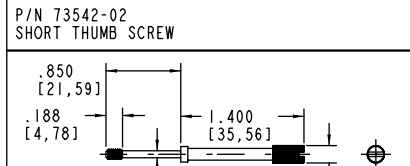
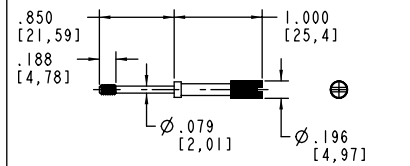
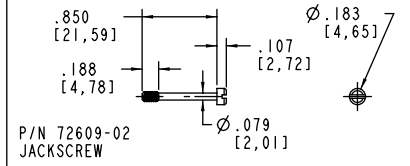
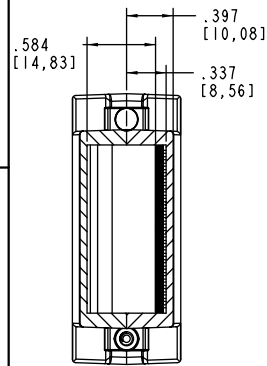


TABLE 2

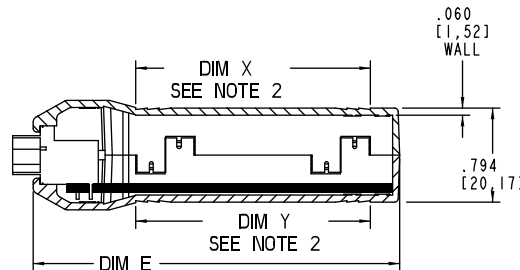
ALL HARDWARE IS 4-40, ALL SCREWS AND THUMB SCREWS ARE CAPTIVE. THE JACK NUT IS NOT CAPTIVE AND THIS ITEM CAN BE THREADED INTO THE HOUSING, OR THE HOLE CAN BE ENLARGED.



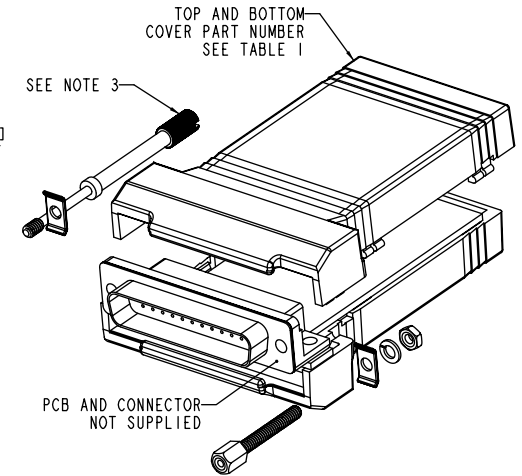
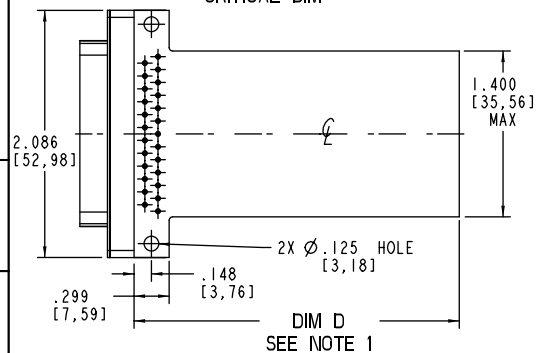
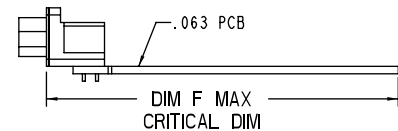
SECTION A-A



SECTION B-B



SECTION C-C



NOTES:

1. ACTUAL PCB LENGTH IS A PRODUCT OF THE CONNECTOR SELECTED.
2. DIM X AND Y ARE TOP AND BOTTOM COVER INSERT AREA X 1.450 [36,83] WIDE.
3. HARDWARE TO BE ORDERED SEPARATE FROM TABLE 2 PER CUSTOMER SPECIFIC REQUIREMENTS.

TABLE 1

CN SIZE	S	M	L	DB25 R ANGLE CONNECTOR TO BLANK END
HOUSING PART NUMBER	CNS-0006	CNM-0006	CNL-0006	PACNTEC® 1-610-361-4200
DIM D PCB SIZE	2.272 [57,71]	2.772 [70,14]	3.272 [83,11]	
DIM E OVERALL SIZE	2.624 [66,65]	3.124 [79,35]	3.624 [92,05]	CN-0006-SERIES SEE TABLE 1
DIM F MAX CRITICAL DIM	2.499 [63,47]	2.999 [76,17]	3.499 [88,87]	
DIM X & Y INSERT AREA	1.500 [38,10]	2.000 [50,80]	2.500 [63,50]	VISIT PACNTEC® ON THE WORLD WIDE WEB www.pactecenclosures.com

COLOR / MATERIAL CODE	
COLOR	94HB 94VO
BLACK	000 028
P.C.BONE	039 060

DRAWING NUMBER	REV
79570	B