

## P-Channel 30-V (D-S) MOSFET

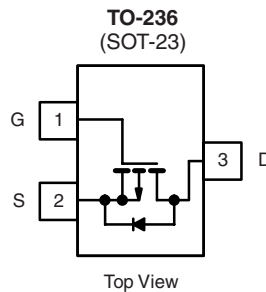
| PRODUCT SUMMARY |                             |                        |
|-----------------|-----------------------------|------------------------|
| $V_{DS}$ (V)    | $R_{DS(on)}$ ( $\Omega$ )   | $I_D$ (A) <sup>b</sup> |
| - 30            | 0.078 at $V_{GS} = - 10$ V  | - 3.2                  |
|                 | 0.130 at $V_{GS} = - 4.5$ V | - 2.5                  |

### FEATURES

- Halogen-free Option Available
- TrenchFET<sup>®</sup> Power MOSFET



**RoHS**  
COMPLIANT



Si2307BDS (L7)\*  
\* Marking Code

Ordering Information: Si2307BDS-T1-E3 (Lead (Pb)-free)  
Si2307BDS-T1-GE3 (Lead (Pb)-free and Halogen-free)

| ABSOLUTE MAXIMUM RATINGS $T_A = 25$ °C, unless otherwise noted |                |               |              |       |   |
|--|----------------|---------------|--------------|-------|---|
| Parameter  | Symbol         | 5 s           | Steady State | Unit  |   |
| Drain-Source Voltage   | $V_{DS}$       | - 30          |              | V     |   |
| Gate-Source Voltage  | $V_{GS}$       | $\pm 20$      |              |       |   |
| Continuous Drain Current ( $T_J = 150$ °C) <sup>b</sup>        | $I_D$          | $T_A = 25$ °C | - 3.2        | - 2.5 | A |
|  |                | $T_A = 70$ °C | - 2.6        | - 2.0 |   |
| Pulsed Drain Current <sup>a</sup>                              | $I_{DM}$       | - 12          |              |       |   |
| Continuous Source Current (Diode Conduction) <sup>b</sup>      | $I_S$          | - 1.25        | - 0.75       |       |   |
| Power Dissipation <sup>b</sup>                                 | $P_D$          | $T_A = 25$ °C | 1.25         | 0.75  | W |
|  |                | $T_A = 70$ °C | 0.8          | 0.48  |   |
| Operating Junction and Storage Temperature Range               | $T_J, T_{stg}$ | - 55 to 150   |              | °C    |   |

| THERMAL RESISTANCE RATINGS               |            |         |         |      |
|--|------------|---------|---------|------|
| Parameter                                | Symbol     | Typical | Maximum | Unit |
| Maximum Junction-to-Ambient <sup>b</sup> | $R_{thJA}$ | 80      | 100     | °C/W |
| Maximum Junction-to-Ambient <sup>c</sup> |            | 130     | 166     |      |

Notes:

- Pulse width limited by maximum junction temperature.
- Surface Mounted on FR4 board,  $t \leq 5$  s.
- Surface Mounted on FR4 board.

For SPICE model information via the Worldwide Web: <http://www.vishay.com/www/product/spice.htm>

| SPECIFICATIONS $T_J = 25\text{ }^\circ\text{C}$ , unless otherwise noted |              |  |        |        |           |               |
|--|--------------|--|--------|--------|-----------|---------------|
| Parameter  | Symbol       | Test Conditions  | Limits |        |           | Unit          |
|  |              |  | Min.   | Typ.   | Max.      |               |
| <b>Static</b>  |              |  |        |        |           |               |
| Drain-Source Breakdown Voltage   | $V_{DS}$     | $V_{GS} = 0\text{ V}$ , $I_D = -10\text{ }\mu\text{A}$   | - 30   |        |           | V             |
| Gate-Threshold Voltage   | $V_{GS(th)}$ | $V_{DS} = V_{GS}$ , $I_D = -250\text{ }\mu\text{A}$  | - 1.0  |        | - 3.0     |               |
| Gate-Body Leakage  | $I_{GSS}$    | $V_{DS} = 0\text{ V}$ , $V_{GS} = \pm 20\text{ V}$   |        |        | $\pm 100$ | nA            |
| Zero Gate Voltage Drain Current  | $I_{DSS}$    | $V_{DS} = -30\text{ V}$ , $V_{GS} = 0\text{ V}$  |        |        | - 1       | $\mu\text{A}$ |
|  |              | $V_{DS} = -30\text{ V}$ , $V_{GS} = 0\text{ V}$ , $T_J = 55\text{ }^\circ\text{C}$   |        |        | - 10      |               |
| On-State Drain Current <sup>a</sup>                                      | $I_{D(on)}$  | $V_{DS} \leq -10\text{ V}$ , $V_{GS} = -10\text{ V}$   | - 6    |        |           | A             |
| Drain-Source On-Resistance <sup>a</sup>                                  | $R_{DS(on)}$ | $V_{GS} = -10\text{ V}$ , $I_D = -3.2\text{ A}$  |        | 0.063  | 0.078     | $\Omega$      |
|  |              | $V_{GS} = -4.5\text{ V}$ , $I_D = -2.5\text{ A}$   |        | 0.105  | 0.130     |               |
| Forward Transconductance <sup>a</sup>                                    | $g_{fs}$     | $V_{DS} = -10\text{ V}$ , $I_D = -3.2\text{ A}$  |        | 5.0    |           | S             |
| Diode Forward Voltage  | $V_{SD}$     | $I_S = -0.75\text{ A}$ , $V_{GS} = 0\text{ V}$   |        | - 0.85 | - 1.2     | V             |
| <b>Dynamic<sup>b</sup></b>   |              |  |        |        |           |               |
| Total Gate Charge  | $Q_g$        | $V_{DS} = -15\text{ V}$ , $V_{GS} = -10\text{ V}$<br>$I_D \cong -1.7\text{ A}$   |        | 9.0    | 15        | nC            |
| Gate-Source Charge   | $Q_{gs}$     |  |        | 1.4    |           |               |
| Gate-Drain Charge  | $Q_{gd}$     |  |        | 2.4    |           |               |
| Gate Resistance  | $R_g$        | $f = 1.0\text{ MHz}$   |        | 8.0    |           | $\Omega$      |
| Input Capacitance  | $C_{iss}$    | $V_{DS} = -15\text{ V}$ , $V_{GS} = 0\text{ V}$ , $f = 1\text{ MHz}$   |        | 380    |           | $\mu\text{F}$ |
| Output Capacitance   | $C_{oss}$    |  |        | 100    |           |               |
| Reverse Transfer Capacitance   | $C_{rss}$    |  |        | 75     |           |               |
| <b>Switching<sup>c</sup></b>   |              |  |        |        |           |               |
| Turn-On Time   | $t_{d(on)}$  | $V_{DD} = -15\text{ V}$ , $R_L = 15\text{ }\Omega$<br>$I_D \cong -1.0\text{ A}$ , $V_{GEN} = -4.5\text{ V}$<br>$R_g = 6\text{ }\Omega$ |        | 9      | 20        | ns            |
|  | $t_r$        |  |        | 12     | 20        |               |
| Turn-Off Time  | $t_{d(off)}$ |  |        | 25     | 40        |               |
|  | $t_f$        |  |        | 14     | 21        |               |

## Notes:

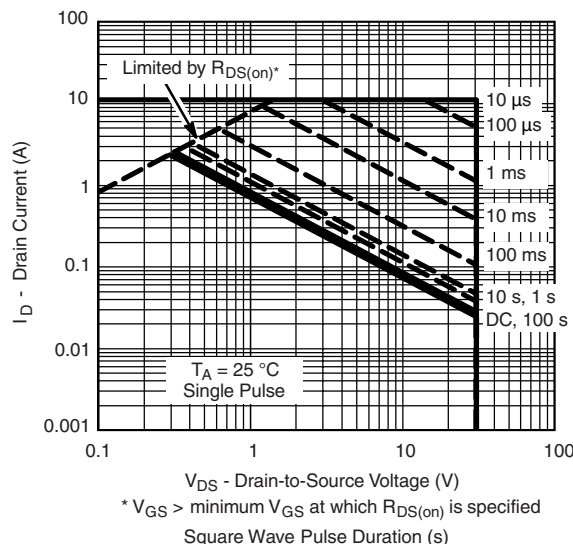
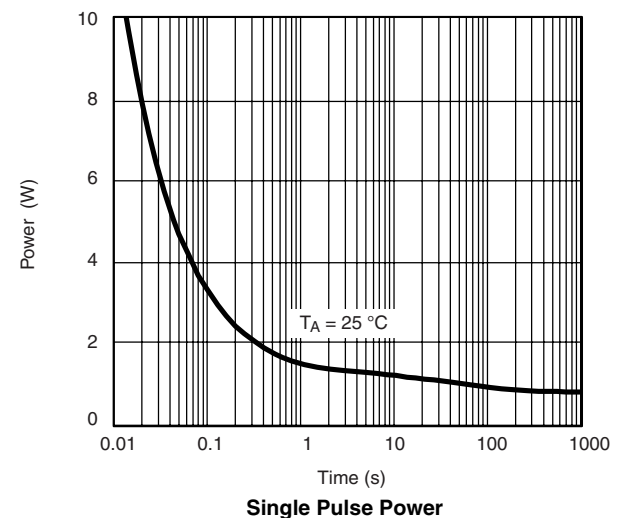
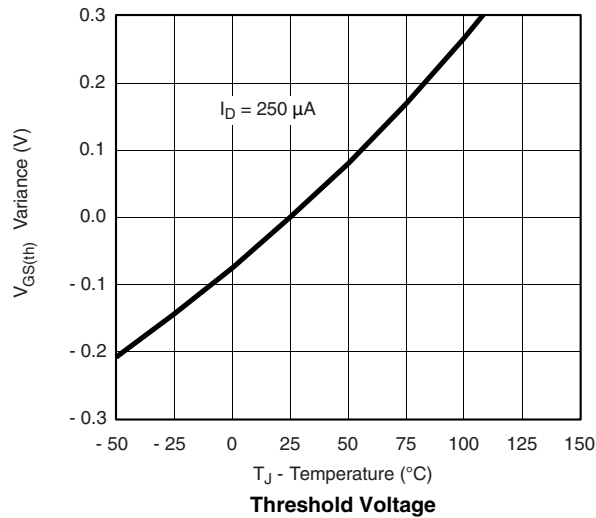
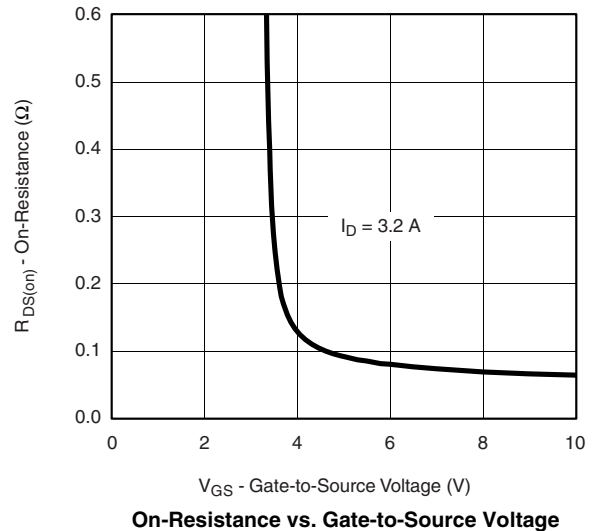
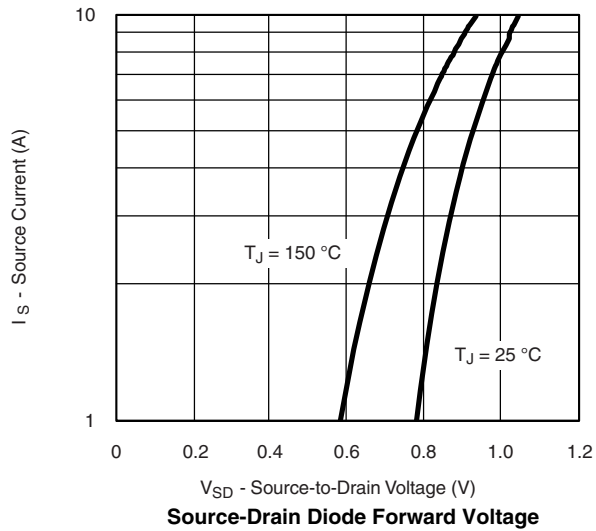
- a. Pulse test: pulse width  $\leq 300\text{ }\mu\text{s}$ , duty cycle  $\leq 2\%$ .  
 b. For DESIGN AID ONLY, not subject to production testing.  
 c. Switching time is essentially independent of operating temperature.

Stresses beyond those listed under "Absolute Maximum Ratings" may cause permanent damage to the device. These are stress ratings only, and functional operation of the device at these or any other conditions beyond those indicated in the operational sections of the specifications is not implied. Exposure to absolute maximum rating conditions for extended periods may affect device reliability.

**TYPICAL CHARACTERISTICS** 25 °C, unless otherwise noted

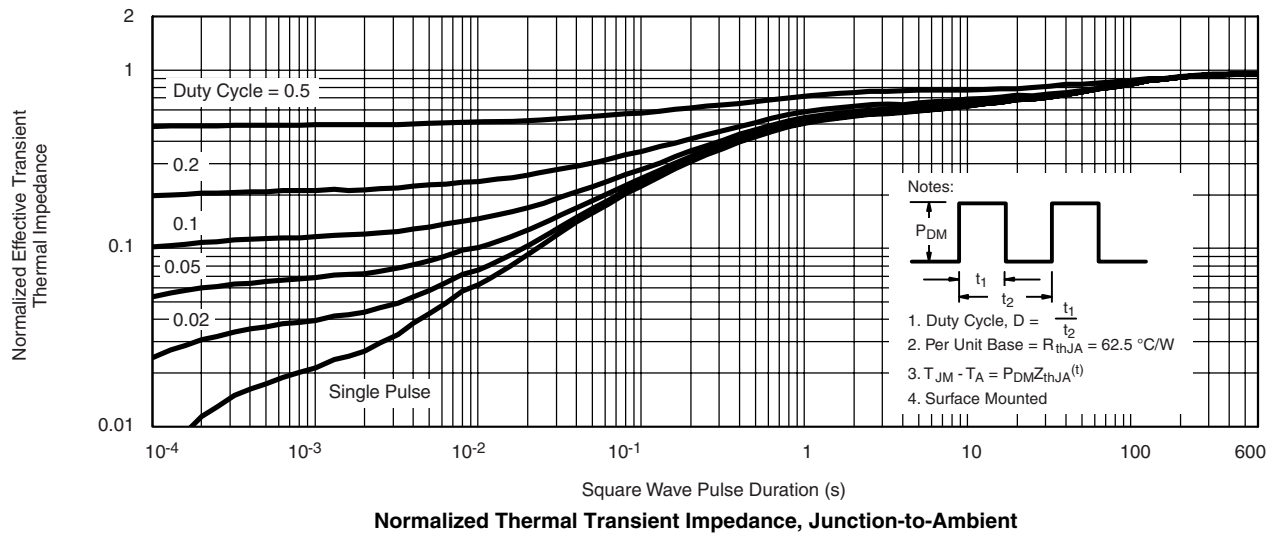


**TYPICAL CHARACTERISTICS** 25 °C, unless otherwise noted



\*  $V_{GS} >$  minimum  $V_{GS}$  at which  $R_{DS(on)}$  is specified  
 Square Wave Pulse Duration (s)

**TYPICAL CHARACTERISTICS** 25 °C, unless otherwise noted



Vishay Siliconix maintains worldwide manufacturing capability. Products may be manufactured at one of several qualified locations. Reliability data for Silicon Technology and Package Reliability represent a composite of all qualified locations. For related documents such as package/tape drawings, part marking, and reliability data, see <http://www.vishay.com/ppg?72699>.

## SOT-23 (TO-236): 3-LEAD



| Dim            | MILLIMETERS |      | INCHES     |       |
|----------------|-------------|------|------------|-------|
|                | Min         | Max  | Min        | Max   |
| A              | 0.89        | 1.12 | 0.035      | 0.044 |
| A <sub>1</sub> | 0.01        | 0.10 | 0.0004     | 0.004 |
| A <sub>2</sub> | 0.88        | 1.02 | 0.0346     | 0.040 |
| b              | 0.35        | 0.50 | 0.014      | 0.020 |
| c              | 0.085       | 0.18 | 0.003      | 0.007 |
| D              | 2.80        | 3.04 | 0.110      | 0.120 |
| E              | 2.10        | 2.64 | 0.083      | 0.104 |
| E <sub>1</sub> | 1.20        | 1.40 | 0.047      | 0.055 |
| e              | 0.95 BSC    |      | 0.0374 Ref |       |
| e <sub>1</sub> | 1.90 BSC    |      | 0.0748 Ref |       |
| L              | 0.40        | 0.60 | 0.016      | 0.024 |
| L <sub>1</sub> | 0.64 Ref    |      | 0.025 Ref  |       |
| S              | 0.50 Ref    |      | 0.020 Ref  |       |
| q              | 3°          | 8°   | 3°         | 8°    |

ECN: S-03946-Rev. K, 09-Jul-01  
 DWG: 5479

## Mounting LITTLE FOOT<sup>®</sup> SOT-23 Power MOSFETs

Wharton McDaniel

Surface-mounted LITTLE FOOT power MOSFETs use integrated circuit and small-signal packages which have been modified to provide the heat transfer capabilities required by power devices. Leadframe materials and design, molding compounds, and die attach materials have been changed, while the footprint of the packages remains the same.

See Application Note 826, *Recommended Minimum Pad Patterns With Outline Drawing Access for Vishay Siliconix MOSFETs*, (<http://www.vishay.com/doc?72286>), for the basis of the pad design for a LITTLE FOOT SOT-23 power MOSFET footprint. In converting this footprint to the pad set for a power device, designers must make two connections: an electrical connection and a thermal connection, to draw heat away from the package.

The electrical connections for the SOT-23 are very simple. Pin 1 is the gate, pin 2 is the source, and pin 3 is the drain. As in the other LITTLE FOOT packages, the drain pin serves the additional function of providing the thermal connection from the package to the PC board. The total cross section of a copper trace connected to the drain may be adequate to carry the current required for the application, but it may be inadequate thermally. Also, heat spreads in a circular fashion from the heat source. In this case the drain pin is the heat source when looking at heat spread on the PC board.

Figure 1 shows the footprint with copper spreading for the SOT-23 package. This pattern shows the starting point for utilizing the board area available for the heat spreading copper. To create this pattern, a plane of copper overlies the drain pin and provides planar copper to draw heat from the drain lead and start the process of spreading the heat so it can be dissipated into the

ambient air. This pattern uses all the available area underneath the body for this purpose.



**FIGURE 1.** Footprint With Copper Spreading

Since surface-mounted packages are small, and reflow soldering is the most common way in which these are affixed to the PC board, “thermal” connections from the planar copper to the pads have not been used. Even if additional planar copper area is used, there should be no problems in the soldering process. The actual solder connections are defined by the solder mask openings. By combining the basic footprint with the copper plane on the drain pins, the solder mask generation occurs automatically.

A final item to keep in mind is the width of the power traces. The absolute minimum power trace width must be determined by the amount of current it has to carry. For thermal reasons, this minimum width should be at least 0.020 inches. The use of wide traces connected to the drain plane provides a low-impedance path for heat to move away from the device.

## RECOMMENDED MINIMUM PADS FOR SOT-23



Recommended Minimum Pads  
Dimensions in Inches/(mm)

[Return to Index](#)





## Disclaimer

ALL PRODUCT, PRODUCT SPECIFICATIONS AND DATA ARE SUBJECT TO CHANGE WITHOUT NOTICE TO IMPROVE RELIABILITY, FUNCTION OR DESIGN OR OTHERWISE.

Vishay Intertechnology, Inc., its affiliates, agents, and employees, and all persons acting on its or their behalf (collectively, "Vishay"), disclaim any and all liability for any errors, inaccuracies or incompleteness contained in any datasheet or in any other disclosure relating to any product.

Vishay makes no warranty, representation or guarantee regarding the suitability of the products for any particular purpose or the continuing production of any product. To the maximum extent permitted by applicable law, Vishay disclaims (i) any and all liability arising out of the application or use of any product, (ii) any and all liability, including without limitation special, consequential or incidental damages, and (iii) any and all implied warranties, including warranties of fitness for particular purpose, non-infringement and merchantability.

Statements regarding the suitability of products for certain types of applications are based on Vishay's knowledge of typical requirements that are often placed on Vishay products in generic applications. Such statements are not binding statements about the suitability of products for a particular application. It is the customer's responsibility to validate that a particular product with the properties described in the product specification is suitable for use in a particular application. Parameters provided in datasheets and/or specifications may vary in different applications and performance may vary over time. All operating parameters, including typical parameters, must be validated for each customer application by the customer's technical experts. Product specifications do not expand or otherwise modify Vishay's terms and conditions of purchase, including but not limited to the warranty expressed therein.

Except as expressly indicated in writing, Vishay products are not designed for use in medical, life-saving, or life-sustaining applications or for any other application in which the failure of the Vishay product could result in personal injury or death. Customers using or selling Vishay products not expressly indicated for use in such applications do so at their own risk and agree to fully indemnify and hold Vishay and its distributors harmless from and against any and all claims, liabilities, expenses and damages arising or resulting in connection with such use or sale, including attorneys fees, even if such claim alleges that Vishay or its distributor was negligent regarding the design or manufacture of the part. Please contact authorized Vishay personnel to obtain written terms and conditions regarding products designed for such applications.

No license, express or implied, by estoppel or otherwise, to any intellectual property rights is granted by this document or by any conduct of Vishay. Product names and markings noted herein may be trademarks of their respective owners.

## Material Category Policy

**Vishay Intertechnology, Inc. hereby certifies that all its products that are identified as RoHS-Compliant fulfill the definitions and restrictions defined under Directive 2011/65/EU of The European Parliament and of the Council of June 8, 2011 on the restriction of the use of certain hazardous substances in electrical and electronic equipment (EEE) - recast, unless otherwise specified as non-compliant.**

**Please note that some Vishay documentation may still make reference to RoHS Directive 2002/95/EC. We confirm that all the products identified as being compliant to Directive 2002/95/EC conform to Directive 2011/65/EU.**