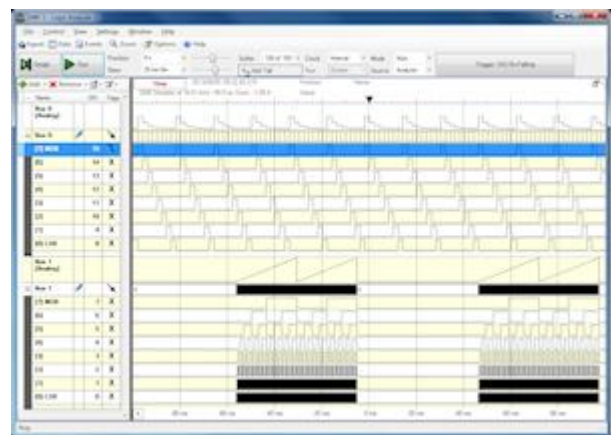
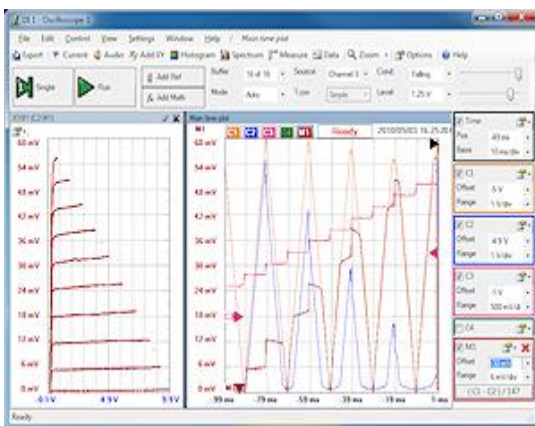


# WaveForms™

WaveForms is a powerful suite of virtual instruments that brings analog and digital circuit design to your PC desktop. WaveForms seamlessly connects to our Analog Design products, such as the Electronics Explorer™ board and the Analog Discovery™ Kit. WaveForms provides a clean, easy to use graphical interface for each instrument, making it easy to acquire, store, analyze, produce, and reuse analog and digital signals



## Oscilloscope

Powerful triggering options, AC/DC coupling, real-time FFT and XY functions data display (FFT, XY, Zoom and others), data export in multiple formats

**Electronics Explorer:** 4 channels, 40MSps, 10-bit converter

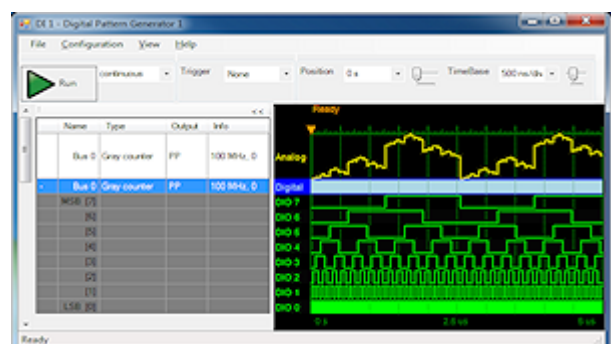
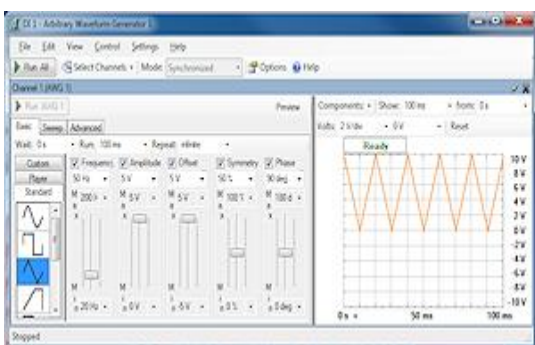
**Analog Discovery:** 2 differential channels, 100MSps, 14-bit converter

## Logic Analyzer

100MSps, up to 16KSa/pin buffer depth, internal/external clock and trigger, multiple visualization options of all signals, data export in multiple formats

**Electronics Explorer:** 32 channels

**Analog Discovery:** 16 channels



## Arbitrary Waveform Generator

Standard, complex(damped and swept, AM/FM modulated) & user-defined waveforms

**Electronics Explorer:** 40MSps, 10-bit converter, 4MHz bandwidth

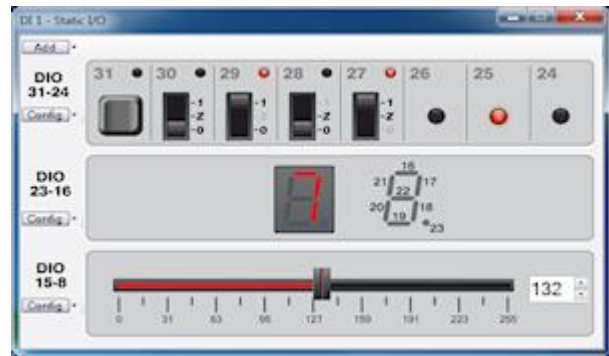
**Analog Discovery:** MSps, 14-converter, 5MHz bandwidth

## Digital Pattern Generator

100MSps, up to 16KSa/pin buffer depth. Digital channels shared with logic analyzer, standard (clock, counters, constant, random, walking values) and custom patterns

**Electronics Explorer:** 32 channels

**Analog Discovery:** 16 channels



## Power Supplies & Voltmeters

**Electronics Explorer:** Programmable, high power supplies with independent voltage and current limit settings of up to 1.5A, configured as simple, low frequency signal generators, one fixed 5V/3.3V, 4 channels voltmeter, two +/-10V reference voltages. Programmable V+ and V- up to +/-9V and 1.5A; fixed 3.3V/5V up to 1.5A

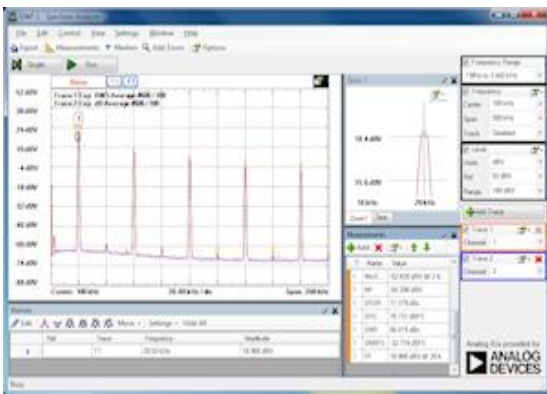
**Analog Discovery:** 2 fixed power supplies. +5V up to 50mA and -5V up to 50mA (100mA total)

## Static I/O

PC-based virtual I/O devices including push buttons, LEDs, switches, seven segment displays, sliders and progress bars

**Electronics Explorer:** 32 channels

**Analog Discovery:** 16 channels



## Spectrum Analyzer

Analog-In channels shared with Oscilloscope. Supports FFT and CZT algorithms. Supports averaging, measurements (harmonics, aliased harmonics, excursion), and data export.

**Electronics Explorer:** 4 channels, 40MSps, 10-bit converter

**Analog Discovery:** 2 channels, 100MSps, 14-bit converter

## For Linux Developers: WaveForms SDK

The WaveForms SDK exposes a public application programming interface (API) that gives you the ability to create custom applications. This is an SDK, not a Linux port of the WaveForms application. These releases are available as tar.gz archives as well as Debian software packages (for simple, 1-click installing), both for i386 and AMD64-based systems.