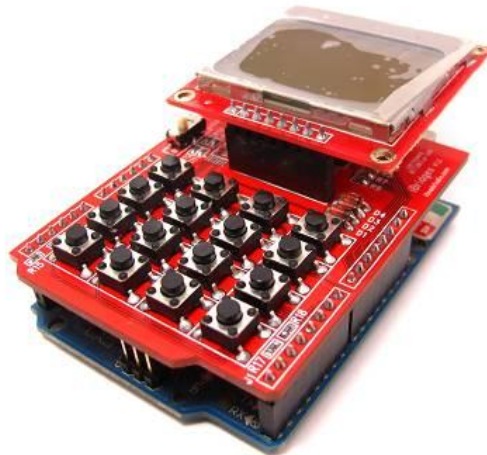


IBridge

- 4X4 Key-pad shield with display interface

Overview



IBridge is a 4X4 key-pad shield with a 5110 Graphic LCD interface. It is compatible with Arduino and IFlat-32, you can plug it on Arduino/IFlat-32 board directly, and you can get the small development platform with keypad input and Graphic LCD display.

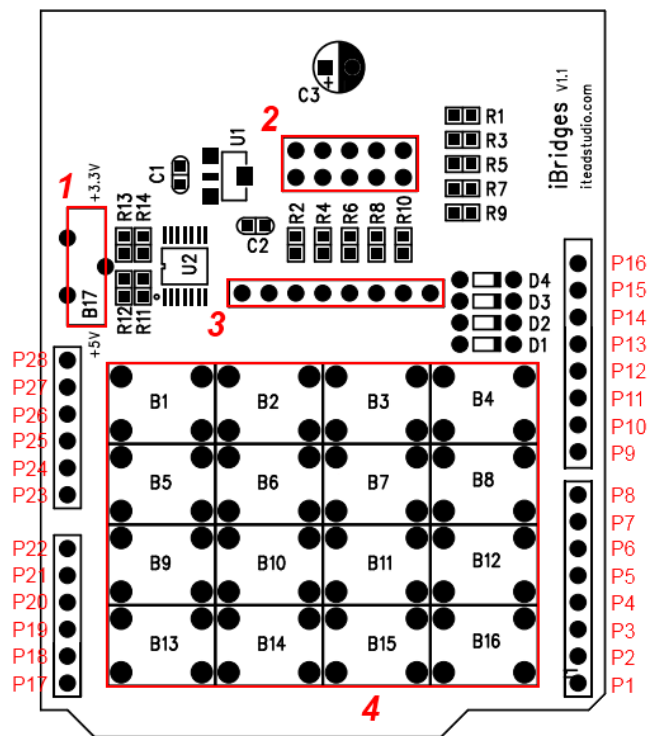
Specifications

PCB size	53.3mm X 68.6mm X 1.6mm
Power supply	5V DC
RoSH	Yes

Electrical Characteristics

Specification	Min	Type	Max	Unit
Power Voltage	4.5	5	5.5	VDC
Input Voltage	Target Voltage = 3.3V			
VH	3	3.3	3.6	V
	Target Voltage = 5V			
	4.5	5	5.5	
Input Voltage VL:	-0.3	0	0.5	V
Current Consumption	-	20	40	mA

Hardware



Zone	Name	Description
1	Switch	Set the keypad input level
2	Jumper	Fix the voltage level that LCD work with
3	LCD5110 socket	Interface for LCD5110
4	Keyboard Zone	16 buttons in scan keyboard

Pins description

Pin	Pad Name	Type	Description
P3	Row2	I	Scan key-board row line 2
P4	Row3	I	Scan key-board row line 3
P5	Column0	O	Scan key-board column line 0
P6	Column1	O	Scan key-board column line 1
P7	Column2	O	Scan key-board column line 2
P8	Column3	O	Scan key-board column line 3
P9	SCK	O	LCD5110 clock
P10	MO	O	LCD5110 data
P11	D/Cn	O	LCD5110 data/command select
P12	RSTn	O	LCD5110 reset
P13	CSn	O	LCD5110 chip select
P17	Row0	I	Scan key-board row line 0
P18	Row1	I	Scan key-board row line 1
P24	GND	G	
P25	GND	G	
P26	VCC	P	

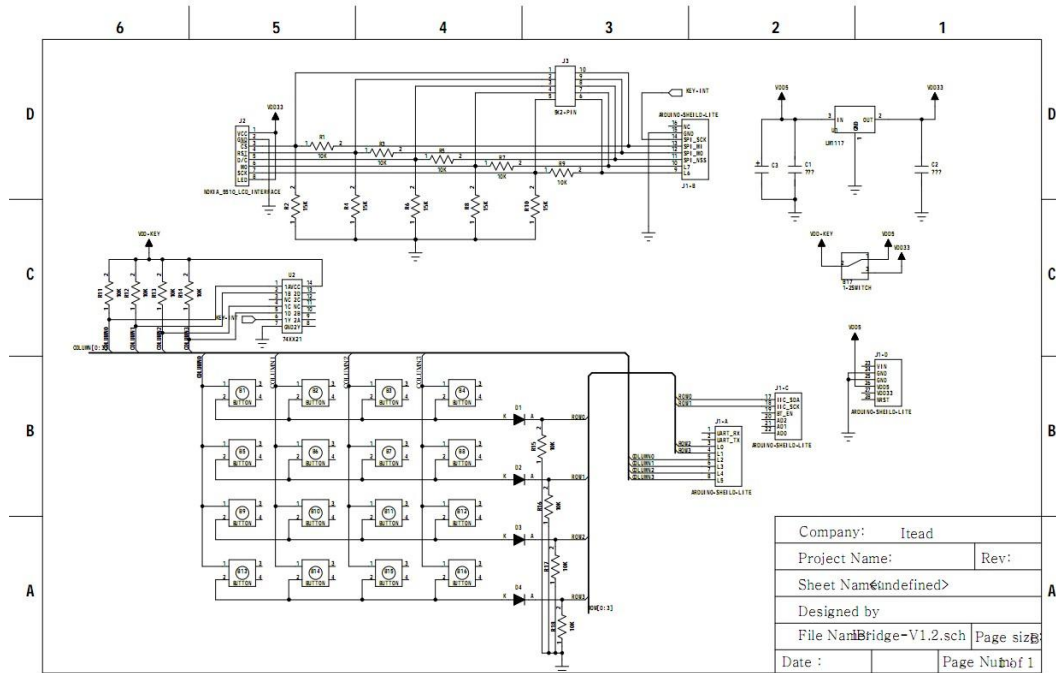
Switch description

Switch	Description
+3.3V	Work with 3.3V system, like IFLAT32
+5V	Work with 5V system, like Arduino , Iteadstudio

Jumper description

Jumper	Description
All	Work with 3.3V system, like IFLAT32
None	Work with 5V system, like Arduino , Iteadstudio

Schematic



Revision History

Rev.	Description	Release date
v1.0	Initial version	2/24/2011