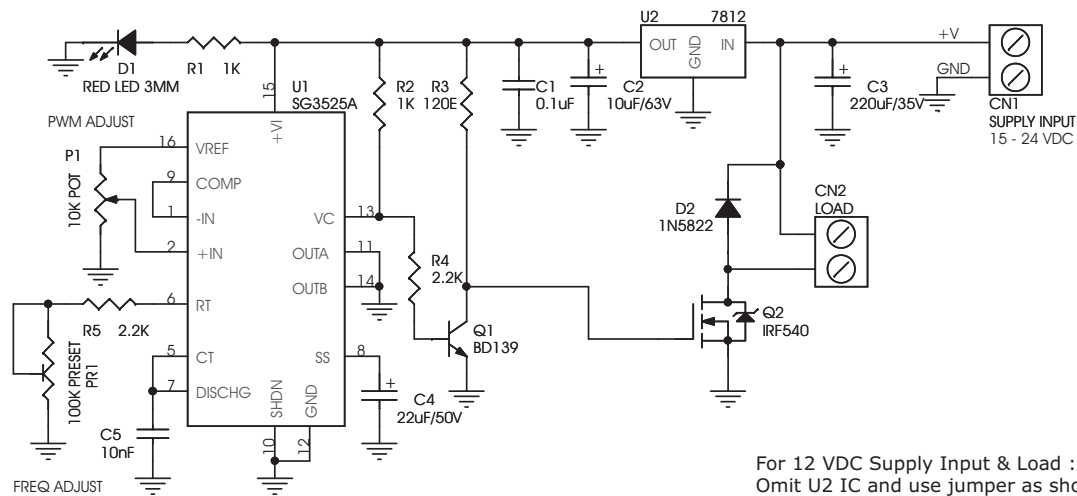


# M060 PWM DC MOTOR SPEED CONTROLLER

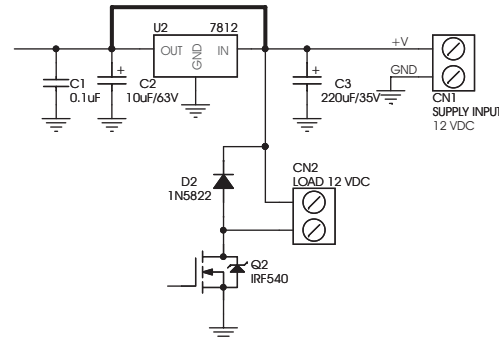
High Current PWM PMDC Motor Speed Controller kit is designed around SG3525 IC and High current MOSFET. Kit can handle 15 to 24 VDC motor upto 5 A load.

- Supply Input 15 to 24 VDC
- Load Motor 15 to 24 VDC @ 2 A ideal (5 A Peak)
- Onboard preset for frequency adjust
- Frequency adjustable 4 KHz to 30 KHz
- PWM Duty cycle 0 to 100% (+/- 5%)
- Potentiometer for speed adjust
- Motor Fast/Slow Start facility
- Clamp diode for protection
- Power-On LED indicator
- Compact design and high quality
- Screw terminal connectors for supply input and load
- Four mounting holes of 3.2 mm each
- PCB dimensions 56 mm x 42 mm



CN1 Connector : Supply Input 15 to 24 VDC  
 CN2 Connector : Load  
 D1 : Power-On LED Indicator  
 P1 : PWM Adjust  
 PR1 : Frequency Adjust

For 12 VDC Supply Input & Load :  
 Omit U2 IC and use jumper as shown below



SR.	QTY.	REF.	DESCRIPTION
1	1	CN1	2 PIN SCREW TERMINAL BLOCK
2	1	CN2	2 PIN SCREW TERMINAL BLOCK
3	1	C1	0.1uF
4	1	C2	10uF/63V OR 50V
5	1	C3	220uF/35V
6	1	C4	22uF/50V
7	1	C5	10nF
8	1	D1	RED LED 3MM
9	1	D2	1N5822
10	1	PR1	100K PRESET
11	1	P1	3 PIN BERG CONNECTOR
12	1	Q1	BD139
13	1	Q2	IRF540
14	2	R1,R2	1K
15	1	R3	120E
16	2	R4,R5	2.2K
17	1	U1	SG3525A/KA3525A
18	1	U2	7812
19	1	POT	10K POTENTIOMETER
20	1	SOCKET	16 PIN DIP IC SOCKET
21	1	HEATSINK	HS04019
22	1	SCREW	SC02905

