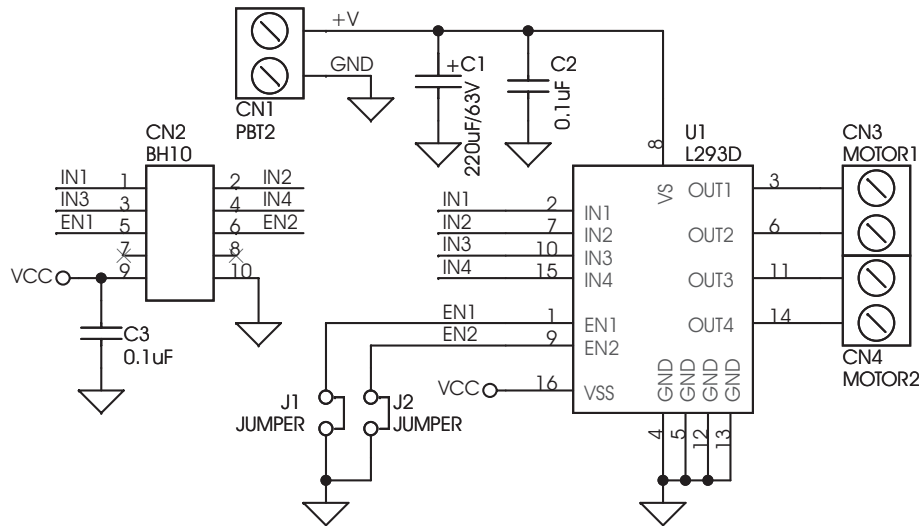
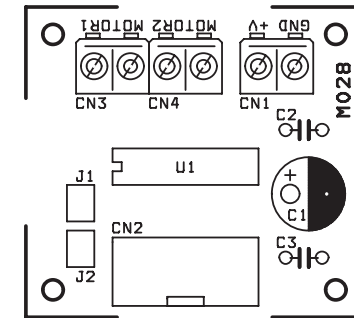


# M028 L293D ADAPTER BOARD

L293D Adapter Board can be use as dual DC motor driver or bipolar stepper motor driver. Useful in robotics application, bidirectional DC motor controller and stepper motor driver. Separate logic supply to reduce dissipation. L293D includes the output clamping diodes withing the IC for protections.

- Motor/Logic supply 5 to 36 V
- Logic controls in 7 VDC max
- Inhibit facility/enable
- High Noise immunity
- Over temperature protection
- Capable of delivering output current up to 600 mA per channel
- The control/interface lines are accessible with 10 pin box header connector
- 10 Pin Box header for easy interface with Micro-controller or logic board
- Screw terminal connector for motor and supply connection
- PCB dimensions 47 mm x 44 mm



SR.	QTY.	REF.	DESCRIPTION
1	1	CN1	2 PIN SCREW TERMINAL CONNECTOR
2	1	CN2	10 PIN BOX HEADER CONNECTOR
3	1	CN3	2 PIN SCREW TERMINAL CONNECTOR
4	1	CN4	2 PIN SCREW TERMINAL CONNECTOR
5	1	C1	220uF/63V
6	2	C2,C3	0.1uF
7	2	J1,J2	2 PIN JUMPER WITH CLOSER
8	1	U1	L293D

CN1 Connector : Motor supply input  
 CN2 Connector : Control input  
 CN3,CN4 Connector : DC motor / Stepper motor  
 J1, J2 Jumper : External enable in

