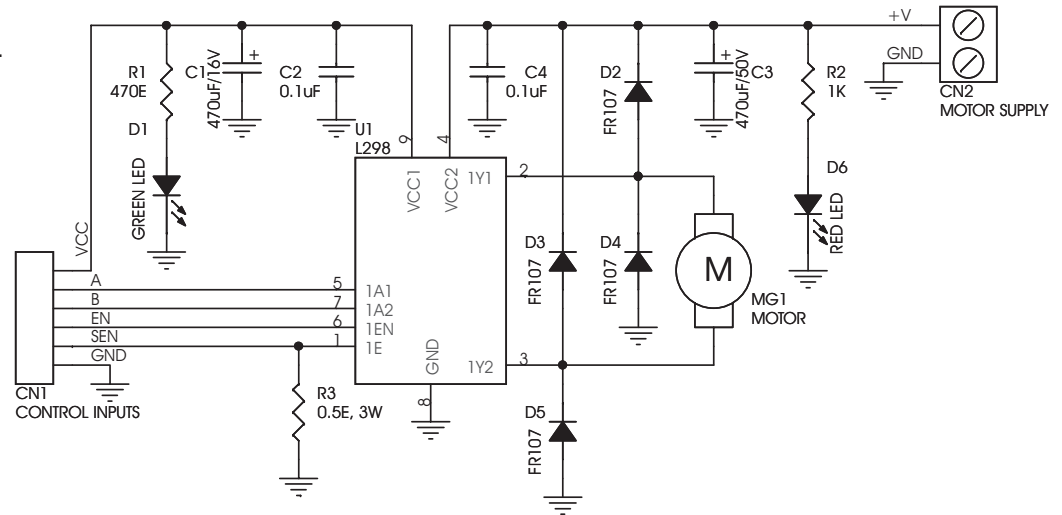


# M006 SINGLE MOTOR L298 H-BRIDGE CONTROL

Single Motor L298 H-Bridge Control kit will provide DC Motor control for your application. This kit uses the famous industry standard L298 H-Bridge IC.

- Motor supply : 7 to 46 VDC
- Control Logic Supply : Standard TTL logic level
- Output DC drive to Motor upto 2 A
- Current Sense Output available
- Onboard resistor provided for current limit
- Enable and direction control pins available
- External diode bridge provided for output
- Heatsink for IC
- Power-On LED indicator
- Screw terminal connector for easy input supply (PWR) / output (Motor) connection
- Four mounting holes of 3.2 mm each
- PCB dimensions 46 mm x 63 mm



CN1 Connector : Control signals and logic supply  
 CN2 Connector : Motor supply 7 to 46 VDC, 2 A current  
 MG1 Connector : DC Motor, Max load 2 A  
 D1 LED : Logic supply indication  
 D6 LED : Motor supply indication

SR.	QTY.	REF.	DESCRIPTION
1	1	CN1	6 PIN BERG CONNECTOR
2	1	CN2	2 PIN SCREW TERMINAL CONNECTOR
3	1	C1	470uF/16V
4	2	C2,C4	0.1uF
5	1	C3	470uF/50V
6	1	D1	GREEN LED
7	4	D2,D3,D4,D5	FR107
8	1	D6	RED LED
9	1	MG1	2 PIN SCREW TERMINAL CONNECTOR
10	1	R1	470E
11	1	R2	1K
12	1	R3	0.5E, 3W
13	1	U1	L298
14	1	HEATSINK	HS09045
15	1	SCREW	SC02909
16	1	NUT	NT02900

