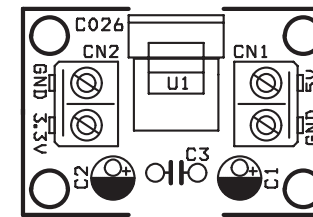
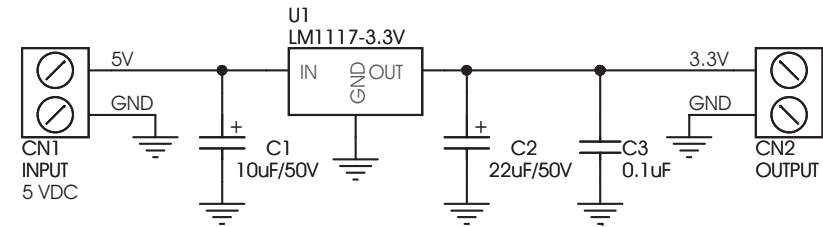
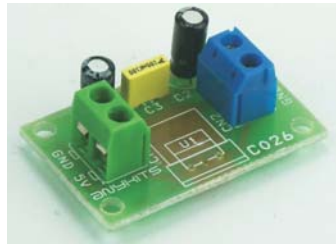


C026 3.3V REGULATOR BOARD

This kit will provide 3.3 V @ 800 mA DC Regulated Supply. The kit based on the LM1117 Low-Dropout Linear Regulator.

- Input - 5 to 15 VDC
- Output - 3.3 V @ 800 mA regulated low ripple DC voltage
- Current limiting and Thermal shutdown circuit protection (provided by IC feature)
- Filter capacitors for low ripple DC output
- Power Battery Terminal (PBT) for easy connection of input and output
- Four mounting holes of 3.2 mm each
- PCB dimensions 37 mm x 25 mm



SR.	QTY.	REF.	DESCRIPTION
1	2	CN1,CN2	2 PIN PBT CONNECTOR
2	1	C1	10uF/50V OR 63V
3	1	C2	22uF/50V
4	1	C3	0.1uF
5	1	U1	LM1117-3.3, AMS1117-3.3

