

# C019 RS232 INTERFACE MODULE

RS232 Interface Module is a simple add-on kit to connect your 5V Serial Data Output to the PC.

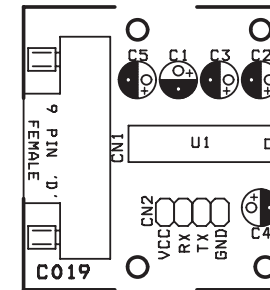
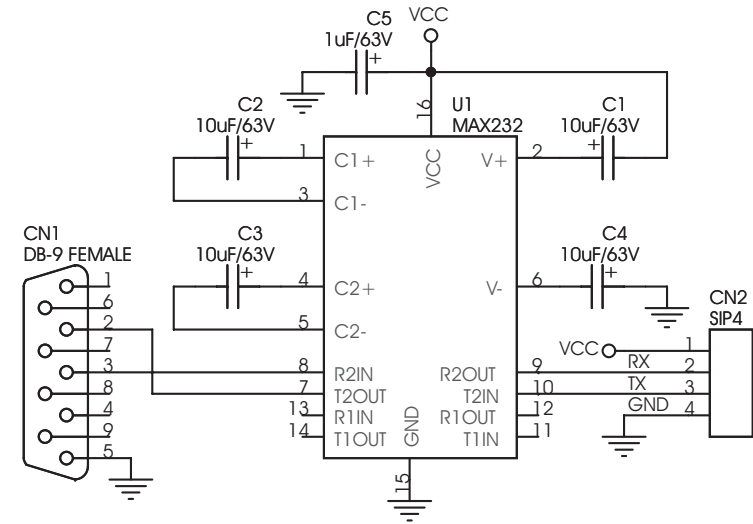
- MAX232 based Level Shifter IC
- Simple and straight forward design
- Easy connection via berg connector to your HOST interface
- Supply provided by the host interface
- Four mounting holes of 3.2 mm each
- PCB dimensions 37 mm x 40 mm

This Kit provides you a simple and easy solution to connect your Microcontroller to the serial port of the Computer for data transfer. This kit uses the famous MAX232 level shifter IC to do the Level Shifting (Voltage) between 5 and 12 VDC.

An Onboard 9 pin D-Connector, female connects this PCB to the Serial Port cable (not supplied with the Kit). Connector CN2 connects to the Host for power supply and serial In/Out signals.

- CN2 : Input Output Connector
- VCC - 5 V Supply
  - RX - data from the computer to the host (Rx/D)
  - TX - data to the computer from the host
  - GND - Ground
- CN1 : 9 pin D-Connector, female to the computer

Please refer to the schematic diagram for the configuration of this board. The kit includes all components required for the project accepts power supply and cabinet. Please check the components supplied to you as per the BOM "Bill of Material" listed in this document. Component legends and In/Out port pins are clearly printed on the PCB.



SR.	QTY.	REF.	DESCRIPTION
1	1	CN1	9 PIN D CONNECTOR - FEMALE
2	1	CN2	4 PIN BERG CONNECTOR
3	4	C1,C2,C3,C4	10uF/63V OR 50V
4	1	C5	1uF/63V
5	1	U1	MAX232
6	1	SOCKET	16 PIN DIP IC SOCKET

