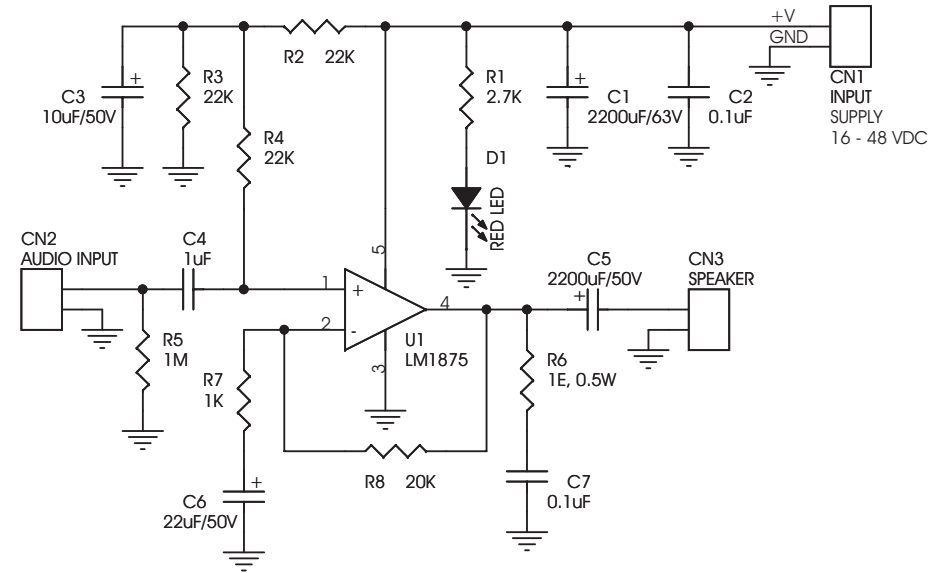


A024 20W AUDIO AMPLIFIER

20W Audio Amplifier kit is based on LM1875 IC.

- Power supply input upto 48 VDC
- Output 20 W, 4 Ω
- Very low distortion (THD 0.015%), good channel separation and ripple rejection
- IC built-in thermal, short circuit protections
- Internal output protection diodes
- Terminal pins for connecting input
- Screw terminal connector for easy power supply input and speaker connection
- Power-On LED indicator
- Heatsink for IC
- Four mounting holes of 3.2 mm each with nut and stud
- PCB dimensions 48 mm x 60 mm



SR.	QTY.	REF.	DESCRIPTION
1	1	CN1	2 PIN SCREW TERMINAL CONNECTOR
2	1	CN2	2 PCB PIN
3	1	CN3	2 PIN SCREW TERMINAL CONNECTOR
4	1	C1	2200uF/63V
5	2	C2,C7	0.1uF
6	1	C3	10uF/50V OR 63V
7	1	C4	1uF
8	1	C5	2200uF/50V
9	1	C6	22uF/50V
10	1	D1	RED LED
11	1	R1	2.7K
12	3	R2,R3,R4	22K
13	1	R5	1M
14	1	R6	1E, 0.5W
15	1	R7	1K
16	1	R8	20K
17	1	U1	LM1875
18	1	HEATSINK	HS02060
19	4	STUD	ST05008
20	4	SCREW	SC02905
21	1	SCREW	SC02909
22	1	NUT	NT02900

